

# HAMPSHIRE WS/WD



Reserve Supreme Champion Wether Sire,  
Champion Hampshire Wether Sire,  
Junior Champion, 1st January Ram Lamb from  
Allred/Elliott sold to California at \$5,500.

Consigned By

## FARROW HAMPSHIRE

Coby Farrow  
10706 E Co Rd 120 - Midland, TX 79706  
(432) 413-7590  
farrowhampshires@gmail.com  
farrowhampshires.com

- 2001- March Ram Lamb**
- 2002- March Ram Lamb**
- 2003- April Ram Lamb**
- 2004- April Ram Lamb**
- 2005- Yearling Ewe**
- 2006- Yearling Ewe**
- 2007- March Ewe Lamb**
- 2008- March Ewe Lamb**
- 2009- March Ewe Lamb**
- 2010- April Ewe Lamb**
- 2011- April Ewe Lamb**
- 2012- April Ewe Lamb**

Above Entries, Information Sale Day

Consigned By

## BEGALKA LIVESTOCK

Donnie Begalka  
46576 187th St - Castlewood, SD 57223  
(605) 881-5056 (605) 873-9309  
sbegalka@itctel.com  
begalkalivestock.com

- 2013- January Ram Lamb**
- 2014- April Ram Lamb**
- 2015- March Ewe Lamb**
- 2016- April Ewe Lamb**
- 2017- April Ewe Lamb**
- 2018- April Ewe Lamb**
- 2019- April Ewe Lamb**

Above Entries, Information Sale Day

Consigned By

## ALLEN SHOW LAMBS

Ty, Nicole, Sayde, Layne & Jayce Allen  
20510 E 1110 Rd - Elk City, OK 73644  
(580) 225-2679 (580) 799-3394  
allennl83@gmail.com  
allenshowlambs.com

- 2020- February Ram Lamb**
- 2021- March Ram Lamb**
- 2022- February Ewe Lamb**
- 2023- March Ewe Lamb**

Above Entries, Information Sale Day

Consigned By

## COLE CLUB LAMBS

Rex & Koby Cole  
11281 N 1975 Rd - Elk City, OK 73466  
(806) 216-1306 (580) 821-2355  
colewoolies@cableone.net  
coleclublambs.com

- 2024- Yearling Ewe**  
S: Ellerbrock
- 2025- Yearling Ewe**  
S: Ellerbrock
- 2026- Yearling Ewe**  
S: Ellerbrock
- 2027- Yearling Ewe**  
S: Ellerbrock

*Ellerbrock ram has added a lot of rear leg and  
stifle dimension to our structural correctness in  
our flock.*

- 2028- January Ewe Lamb**  
S: Ellerbrock
- 2029- February Ewe Lamb**  
S: Ellerbrock
- 2030- February Ewe Lamb**  
S: Ellerbrock
- 2031- March Ewe Lamb**  
S: Ellerbrock
- 2032- March Ewe Lamb**  
S: Ellerbrock
- 2033- April Ewe Lamb**

Above Entries, Information Sale Day

Consigned By

## JOHNSON FAMILY SHOW STOCK

W 8778 Kilkenney Rd - Delavan, WI 53115  
(608) 289-5686 (260) 609-7369  
johnsonfamilyshowstock@gmail.com  
johnsonfamilyshowstock.com

- 2034- January Ram Lamb**
- 2035- February Ram Lamb**
- 2036- March Ram Lamb**
- 2037- April Ram Lamb**
- 2038- December Ewe Lamb**
- 2039- January Ewe Lamb**
- 2040- March Ewe Lamb**
- 2041- April Ewe Lamb**

Above Entries, Information Sale Day

Consigned By

## MENNEN CLUB LAMBS

Brent Mennen  
7123 E CR 250 S - Walton, IN 46994  
(765) 437-6020 (574) 735-3719  
mennenclublambs@aol.com  
mennenclublambs.com

- 2042- January Ram Lamb**
- 2043- February Ewe Lamb**
- 2044- March Ewe Lamb**

Above Entries, Information Sale Day

Consigned By

## GREINER CLUB LAMBS

Ted Greiner  
25517 330th Ave - Keota, IA 52248  
(641) 660-6839  
tedgreiner@gmail.com  
greinerclublambs.com

- 2045- March Ewe Lamb**
- 2046- March Ewe Lamb**

Above Entries, Information Sale Day

Consigned By

## KIRSCHTEN SHEEP FARM

Shane Kirschten  
5060 Jefferson Ave - Alton, IA 51003  
(712) 395-0377 (712) 756-8953  
kirschten59@gmail.com  
kirschtensheepfarm.simdif.com

- 2047- Yearling Ram**
- 2048- March Ram Lamb**
- 2049- April Ram Lamb**
- 2050- April Ewe Lamb**

Above Entries, Information Sale Day

# HAMPSHIRE WS/WD

Consigned By

## HAYS BROTHERS CLUB LAMBS

Matthew & Michael Hays  
3427 Linn Rd - Perry, KS 66073  
(785) 438-0339  
hays.m@hotmail.com  
hbclublambs.com

- 2051- Yearling Ram
- 2052- February Ram Lamb
- 2053- February Ram Lamb
- 2054- March Ram Lamb
- 2055- March Ram Lamb
- 2056- March Ram Lamb
- 2057- April Ram Lamb
- 2058- April Ram Lamb
- 2059- April Ram Lamb
- 2060- February Ewe Lamb
- 2061- March Ewe Lamb
- 2062- March Ewe Lamb
- 2063- April Ewe Lamb
- 2064- April Ewe Lamb

Above Entries, Information Sale Day

Lambs will sired by YoYo, Bullet, Ambush and Don't Stop (New sire from Poe this year sired by Full Monty).

Consigned By

## STEVA ROBINSON SHOW STOCK

Box 95 - Belmont, WI 53510  
(574) 527-0967  
stevarobinson@gmail.com  
stevarobinson.com

- 2065- March Ewe Lamb
- Information Sale Day

Consigned By

## HEEGS CRAZY H CLUB LAMBS

Jason Heeg  
PO Box 217 - Shepherd, MT 59079  
(406) 855-1478 (406) 947-2093  
crazyhclublambs@outlook.com  
crazyhclublambs.com

- 2066- December Ewe Lamb
  - 2067- January Ewe Lamb
  - 2068- February Ewe Lamb
  - 2069- March Ewe Lamb
- Above Entries, Information Sale Day

Consigned By

## HARMS SHOW LAMBS

Larry & Barb Harms  
27638 E 2450 N Rd - Lexington, IL 61753  
(309) 825-3485  
hrmsshwlmbs@prairieinet.net  
harmsshowlambs.com

### 2070- Yearling Ewe

Harms PS 44 ST 1400 QR-NN  
B: 02/03/2016 Triplet  
S: Viking 4136 Night Train 599591  
D: Harms CR-12 - 1500 Sg 38939

Consigned By

## KENNEDY LIVESTOCK

Matt, Jalene & Flint Kennedy  
17994 Richland Rd - Kirkville, IA 52566  
(979) 224-0081  
matt.kennedy147@gmail.com  
kennedyclublambs.com

### 2071- April Ewe Lamb

Information Sale Day

Consigned By

## PARR FAMILY HAMPSHIRE

Roger & Marie Parr  
33425 E CR 1000 N - Mason City, IL 62664  
(217) 871-4555 (217) 482-3680  
rparr@frontiernet.net  
parrhampshires.com

### 2072- January Ram Lamb

Thick- Thick- Think ram here.

### 2073- January Ram Lamb

Sired by APOLLO, the sire of the Champion Premier Wether 2016 IL State Fair Land of Lincoln on foot.

### 2074- February Ram Lamb

APOLLO also sired the Reserve Champion Premier on the rail.

### 2075- February Ram Lamb

### 2076- Yearling Ewe

### 2077- January Ewe Lamb

This is her! The heaviest muscled lamb I have ever seen, you must check her out. Sired by APOLLO.

### 2078- January Ewe Lamb

### 2079- February Ewe Lamb

Do not miss the chance to get a great club lamb prospect. These ewes will make a great addition to your flock or starting a flock. Call us if you have any question or needs and check our website for pictures of all our entries.

Above Entries, Information Sale Day

Consigned By

## HILL COUNTRY SHOW LAMBS

Rodney Yates  
PO Box 1491 - Boerne, TX 78006  
(830) 446-9031  
hcsyates@yahoo.com  
hillcountrysoffolks.com

### 2080- January Ram Lamb

### 2081- February Ram Lamb

### 2082- March Ram Lamb

### 2083- Yearling Ewe

### 2084- Yearling Ewe

### 2085- February Ewe Lamb

### 2086- March Ewe Lamb

Above Entries, Information Sale Day

Consigned By

## WRIGHTS ROCKY ACRES

Don & Alicia Wright  
25250 State Hwy 413 - Galena, MO 65656  
(417) 437-7381 (417) 236-2010  
wrightsrockyacres@hotmail.com  
wrightsrockyacres.com

### 2087- February Ram Lamb

### 2088- Yearling Ewe

### 2089- Yearling Ewe

Above Entries, Information Sale Day

### 2090- January Ewe Lamb

Wright 0513 RR

B: 01/15/2017 AI

### 2091- January Ewe Lamb

### 2092- February Ewe Lamb

### 2093- April Ewe Lamb

Above Entries, Information Sale Day



# HAMPSHIRE WS/WD



Supreme Champion Wether Dam,  
Champion Hampshire Wether Dam,  
Junior Champion, 1st January Ewe Lamb from  
Allred/Elliott sold to Utah at \$11,500.

Consigned By

## RULE SHEEP COMPANY

Tyson Rule  
PO Box 27 - Hawarden, IA 51023  
(712) 422-0344 (712) 552-2499  
tysonrule@hotmail.com  
rulesheep.com

- 2094- Fall Ram Lamb
- 2095- Fall Ram Lamb
- 2096- January Ram Lamb
- 2097- January Ram Lamb
- 2098- February Ram Lamb
- 2099- February Ram Lamb
- 2100- March Ram Lamb
- 2101- January Ram Lamb
- 2102- March Ram Lamb
- 2103- March Ram Lamb
- 2104- April Ram Lamb
- 2105- April Ram Lamb
- 2106- January Ewe Lamb
- 2107- January Ewe Lamb
- 2108- January Ewe Lamb
- 2109- February Ewe Lamb
- 2110- February Ewe Lamb
- 2111- February Ram Lamb
- 2112- March Ewe Lamb
- 2113- March Ewe Lamb
- 2114- March Ewe Lamb
- 2115- March Ewe Lamb
- 2116- March Ewe Lamb
- 2117- March Ewe Lamb
- 2118- March Ewe Lamb
- 2119- March Ewe Lamb

- 2120- March Ewe Lamb
- 2121- March Ewe Lamb
- 2122- March Ewe Lamb
- 2123- March Ewe Lamb
- 2124- April Ewe Lamb
- 2125- April Ewe Lamb
- 2126- April Ewe Lamb
- 2127- April Ewe Lamb
- 2128- April Ewe Lamb
- 2129- April Ewe Lamb
- 2130- April Ewe Lamb
- 2131- April Ewe Lamb
- 2132- April Ewe Lamb
- 2133- April Ewe Lamb
- 2134- April Ewe Lamb
- 2135- April Ewe Lamb

Above Entries, Information Sale Day

Check our website for updates on specific  
pedigrees and lot information. Sheep will be  
sired by Drop the Mic, OCD, Artic Invasion,  
Shank N Bake, Kobra Kai, Rogue Nation, and  
Angry Dragon.

Consigned By

## NOC SHEEP CENTER

Bart Cardwell, Herdsman  
1220 E Grand, PO Box 310  
Tonkawa, OK 74653  
(580) 716-2550  
bart.cardwell@noc.edu  
noc.edu/agriculture.sciences

- 2136- Yearling Ram  
NOC 6030 601905  
B: 02/15/2016 Twin  
S: Persimmon Creek 11571 600086  
D: NOC 4113 51769

Really good ewe family behind this one.  
Dam is APRICOT. She was Reserve Champi-  
on Crossbred at the 1st NEOLA in Stillwater  
2015. Sire is a KOOL AID son.

- 2137- Yearling Ewe  
Information Sale Day  
Ring Master Daughter.

Consigned By

## OTT CLUB LAMBS

Deb & Brad Ott  
50653 S Co Rd 257 - Fairview, OK 73737  
(580) 794-9324  
bott@pldi.net  
ottclublambs.com

- 2138- January Ram Lamb
- 2139- January Ram Lamb
- 2140- February Ram Lamb
- 2141- February Ram Lamb
- 2142- February Ram Lamb
- 2143- March Ram Lamb
- 2144- March Ram Lamb
- 2145- March Ram Lamb
- 2146- March Ram Lamb
- 2147- January Ewe Lamb
- 2148- January Ewe Lamb
- 2149- February Ewe Lamb
- 2150- February Ewe Lamb

Above Entries, Information Sale Day

Consigned By

## TURNER SHOW STOCK

Andy & Jeribeth Turner  
1220 Hynds Ranch Rd - VanAlstyne, TX 75495  
(254) 290-0420 (903) 816-1208  
turnershowstock@gmail.com  
turnershowstock.com

- 2151- Yearling Ram
- 2152- April Ram Lamb
- 2153- Yearling Ewe
- 2154- Yearling Ewe
- 2155- March Ewe Lamb
- 2156- April Ewe Lamb

Above Entries, Information Sale Day

Consigned By

## PIRTLE FARMS

Randy & Susan Pirtle  
397271 W 400 Rd - Copan, OK 74022  
(918) 440-4553 (918) 440-5991  
pcopan1@aol.com  
pirtlefarms.com

- 2157- March Ram Lamb
- 2158- March Ewe Lamb

Above Entries, Information Sale Day

# HAMPSHIRE WS/WD

Consigned By

## SIMPSON LIVESTOCK

Jason Simpson  
20839 CR 84 - Ault, CO 80610  
(970) 371-0276  
jsimpsoncl@aol.com  
simpsonlivestock.com

**2159- Yearling Ram**

**2160- Fall Ram Lamb**

**2161- January Ram Lamb**

**2162- February Ram Lamb**

**2163- March Ram Lamb**

**2164- January Ewe Lamb**

**2165- February Ewe Lamb**

**2166- March Ewe Lamb**

**2167- April Ewe Lamb**

Above Entries, Information Sale Day

Consigned By

## PERRY CLUB LAMBS

Dan Perry  
10253 S 400 W 90 - Montpelier, IN 47359  
(765) 348-7806  
rockbottom@onlyinternet.net

**2168- February Ewe Lamb**

**2169- March Ewe Lamb**

Above Entries, Information Sale Day

Consigned By

## STORMS HAMPSHIRE

Suzanna Storms  
859 Washburn Rd - Washburn, IL 61570  
(309) 231-1292 (309) 248-7823  
suzanna.storms@gmail.com  
stormshampshires.com

**2170- February Ram Lamb**

Storms 657

B: 02/19/2017 AI

S: FORTY

D: Storms 516

*Sired by the Supreme Champion Wether Sire at Sedalia in 2015 and out of an AUTHENTIC daughter.*

Consigned By

## MCLAUGHLIN GRIFFIN SHEEP

Willard McLaughlin  
400 CR 220 - Craig, CO 81625  
(970) 629-0263 (970) 629-5982  
mclaughlinsheep@gmail.com

**2171- March Ram Lamb**

**2172- March Ram Lamb**

**2173- February Ewe Lamb**

**2174- February Ewe Lamb**

**2175- March Ewe Lamb**

**2176- March Ewe Lamb**

**2177- March Ewe Lamb**

Above Entries, Information Sale Day

Consigned By

## WILLIAMS SHOW LAMBS

Heath Williams  
12191 431st Ave - Mabel, MN 55954  
(507) 450-7107  
williamsshowlambs@gmail.com

**2178- January Ram Lamb**

**2179- March Ram Lamb**

Above Entries, Information Sale Day

Consigned By

## ALLRED/ELLIOTT

Clay Elliott  
17422 Elm St W - Calumet, OK 73014  
(575) 635-6340  
lilielliott@hotmail.com  
allredelliott.com

**2180- Yearling Ram**

**2181- February Ram Lamb**

**2182- February Ram Lamb**

**2183- March Ram Lamb**

**2184- March Ram Lamb**

**2185- April Ram Lamb**

**2186- Yearling Ewe**

**2187- January Ewe Lamb**

**2188- February Ewe Lamb**

**2189- February Ewe Lamb**

**2190- March Ewe Lamb**

**2191- March Ewe Lamb**

**2192- March Ewe Lamb**

Above Entries, Information Sale Day

Consigned By

## MILLER HAMPSHIRE

Jim Miller  
1550A CR 121 - Seagraves, TX 79359  
(806) 487-6891  
millerhampshires@hotmail.com

**2193- Yearling Ewe**

**2194- Yearling Ewe**

**2195- Yearling Ewe**

**2196- Yearling Ewe**

**2197- Yearling Ewe**

**2198- Yearling Ewe**

**2199- Yearling Ewe**

**2200- Yearling Ewe**

Above Entries, Information Sale Day

Consigned By

## POWERCAT CLUB LAMBS

Jim Nelssen & Family  
7234 Tuttle Creek Blvd  
Manhattan, KS 66503  
(785) 200-4543 (785) 776-1407  
jnelssen@ksu.edu  
powercatclublambs.com

**2201- April Ram Lamb**

**2202- April Ram Lamb**

**2203- April Ram Lamb**

*We plan on bringing our best 3 April ram lambs to the Midwest Stud Ram Sale for your viewing!*

**2204- March Ewe Lamb**

*We wanted to bring our best Hindman BUCKLE UP ewe lamb to Sedalia! This ewe lamb is DONOR QUALITY and we do not take DONOR quality lightly at our farm. She is out of our 4-D LARGE daughter of 2014! Buy with confidence. She is as good as our 1st place April ewe lamb from last year!*

**2205- April Ewe Lamb**

**2206- April Ewe Lamb**

Above Entries, Information Sale Day





# HAMPSHIRE WS/WD



Res Champion Hampshire Wether Sire, Res Junior Champ, 1st February Ram Lamb from Allen Show Lambs sold to Pennsylvania at \$10,250.

Consigned By

## FLEENER CLUB LAMBS

Kyle Fleener  
807 Beecherstown Rd  
Biglerville, PA 17307  
(717) 304-9116 (717) 269-2500  
fleenerkm@yahoo.com

### 2207- January Ewe Lamb

S: Allen Show Lambs G299 601449  
ROOSTER  
D: FCL 1311 51162

### 2208- February Ewe Lamb

### 2209- March Ewe Lamb

S: Allen Show Lambs G299 601449  
ROOSTER  
D: McCandlish 1301 48361  
Above Entries, Information Sale Day

Consigned By

## SCHMITZ CLUB LAMBS

Scott & Shelly Schmitz  
11467 W 76th St N - Rhodes, IA 50234  
(641) 485-9860  
ssschmitz@partnercom.net  
schmitzclublambs.com

### 2210- Yearling Ram

### 2211- January Ram Lamb

### 2212- January Ram Lamb

### 2213- February Ram Lamb

### 2214- February Ram Lamb

### 2215- March Ram Lamb

### 2216- March Ram Lamb

### 2217- April Ram Lamb

### 2218- March Ewe Lamb

### 2219- March Ewe Lamb

### 2220- April Ewe Lamb

### 2221- April Ewe Lamb

Above Entries, Information Sale Day

Consigned By

## BOOTLEGGER CLUB LAMBS

Patricia Coady  
1022 County Rd - Mead, NE 68041  
(402) 277-6246 (402) 624-5845  
mjrc3@windstream.net

### 2222- January Ram Lamb

### 2223- February Ram Lamb

### 2224- January Ewe Lamb

### 2225- February Ewe Lamb

Above Entries, Information Sale Day  
*These lambs are sired by Wildman (Powercat 15060). Wildman is a 4-D Large son on an Evolution daughter. All of the dams are from Guy Glasscock bloodlines consisting of 4-D Large, PBR, and a 4-D Large son.*

Consigned By

## SLACK CLUB LAMBS

Tom Slack  
1022 W 1300 N  
North Manchester, IN 46962  
(260) 750-7399 (260) 982-8714  
luvmysheep@aol.com  
slackclublambs.com

### 2226- Yearling Ram

### 2227- Fall Ram Lamb

### 2228- Fall Ram Lamb

### 2229- January Ram Lamb

### 2230- January Ram Lamb

### 2231- February Ram Lamb

### 2232- February Ram Lamb

### 2233- March Ram Lamb

### 2234- March Ram Lamb

### 2235- Yearling Ewe

### 2236- Yearling Ewe

### 2237- Fall Ewe Lamb

### 2238- January Ewe Lamb

### 2239- February Ewe Lamb

### 2240- March Ewe Lamb

### 2241- March Ewe Lamb

### 2242- March Ewe Lamb

Above Entries, Information Sale Day

Consigned By

## HARKER FARMS

Adam & Trena Harker  
12402 Valley View Rd  
Mountain Grove, MO 65711  
(417) 254-1731  
aharker22@gmail.com

### 2243- April Ram Lamb

HFZ 8650-51 602255

B: 04/03/2017 Single

S: HFZ 8650-32 601013

D: Johnson 1338 44416 D

Consigned By

## HINDMAN SHOW LAMBS

Mike Hindman  
1648 640th Ave - Albia, IA 52531  
(515) 491-7829  
hindmanlamb@yahoo.com

### 2244- February Ram Lamb

### 2245- March Ram Lamb

### 2246- February Ewe Lamb

### 2247- February Ewe Lamb

### 2248- February Ewe Lamb

### 2249- March Ewe Lamb

### 2250- March Ewe Lamb

Above Entries, Information Sale Day

Consigned By

## WEST COAST CLUB LAMBS

Tom East & Gary Nix  
9680 Eastside Potter Valley Rd  
Potter Valley, CA 95469  
(707) 354-4369  
eastcovel@yahoo.com  
westcoast-clublambs.com

### 2251- March Ram Lamb

West Coast 749

B: 03/02/2017 Twin

S: Slack 5478 WESTSIDE 599628

D: Rule 5045 ET 57899D

*Sire is son of a Rule ewe (Burn daughter) we bought in Reno. She is a moderate framed, thick topped ewe with a great pin set. An out-cross I think you will like.*

### 2252- March Ewe Lamb

West Coast 748

B: 03/02/2017 Twin

S: Slack 5478 WESTSIDE 599628

D: Rule 5045 ET 57899D

*Twin to ram lamb entry and should probably keep her, but I bred her mother as a lamb and kept the yearling. Trying to keep the ewe flock at 40. Check her out, she is nice!*

# HAMPSHIRE WS/WD

Consigned By

## ELLERBROCK CLUB LAMBS

Jeff & Brad Ellerbrock  
13383 E 2000th St - Atkinson, IL 61235  
(309) 657-7515  
bellerbrock@nbsmail.net  
ellerbrockclublambs.com

- 2253- January Ram Lamb**
- 2254- January Ram Lamb**
- 2255- January Ram Lamb**
- 2256- February Ram Lamb**
- 2257- February Ram Lamb**
- 2258- February Ram Lamb**
- 2259- March Ram Lamb**
- 2260- March Ram Lamb**
- 2261- March Ram Lamb**
- 2262- April Ram Lamb**
- 2263- April Ram Lamb**
- 2264- January Ewe Lamb**
- 2265- January Ewe Lamb**
- 2266- February Ewe Lamb**
- 2267- February Ewe Lamb**
- 2268- March Ewe Lamb**
- 2269- March Ewe Lamb**
- 2270- March Ewe Lamb**
- 2271- April Ewe Lamb**
- 2272- April Ewe Lamb**

Above Entries, Information Sale Day

Consigned By

## DREWRY CLUB LAMBS

Don Drewry  
3105 250 St E - Farmington, MN 55024  
(651) 894-3466 (651) 463-8578  
don.drewry@frontier.com  
drewryclublambs.com

- 2273- March Ewe Lamb**  
Drewry 176xx\_R  
B: 03/22/2017 Single  
S: Gomez - Rick Adams tbd  
D: Drewry TBD n/a

*Gomez lambs tend to have good bone, wide tops, square hips and lots of shag. For more info on our flock see DrewryClubLamb.com or our Facebook page.*

Consigned By

## ALLISON MCGOLDEN CLUB LAMBS

Chris McGolden  
PO Box 744 - Arapaho, OK 73620  
(580) 331-7198  
cmcgolden@hotmail.com  
allisonmcgoldenclublambs.com

- 2274- February Ram Lamb**
- 2275- Yearling Ewe**
- 2276- Yearling Ewe**
- 2277- Yearling Ewe**
- 2278- February Ewe Lamb**
- 2279- March Ewe Lamb**
- 2280- March Ewe Lamb**
- 2281- April Ewe Lamb**

Above Entries, Information Sale Day

Consigned By

## WOLF CLUB LAMBS

Dave Wolf  
957 E Ave - Scranton, IA 51462  
(712) 830-3625 (712) 652-3887  
mcpope@netins.net  
wolfclublambs.com

- 2282- Yearling Ram**
- 2283- March Ram Lamb**
- 2284- April Ram Lamb**
- 2285- April Ewe Lamb**

Above Entries, Information Sale Day

Consigned By

## ROOKSTOOL CLUB LAMBS

Dustin & Rebecca Rookstool  
9377 Broderick Rd - Wamego, KS 66547  
(785) 410-3826 (785) 456-4096  
Rebecca.rookstool@  
alumni.washburnlaw.edu  
Facebook Rookstool Club Lambs

- 2286- February Ewe Lamb**
- 2287- February Ewe Lamb**
- 2288- April Ram Lamb**
- 2289- March Ewe Lamb**

Above Entries, Information Sale Day

Consigned By

## CREGO LIVESTOCK

Larry, Diana, Joaquin & Justin Crego  
7710 Livestock Ln - Ft Collins, CO 80524  
(970) 217-9059 (970) 482-6958  
cregols@msn.com

- 2290- Yearling Ram**
- 2291- Yearling Ram**
- 2292- January Ram Lamb**
- 2293- January Ram Lamb**
- 2294- February Ram Lamb**
- 2295- February Ram Lamb**
- 2296- March Ram Lamb**
- 2297- January Ewe Lamb**
- 2298- January Ewe Lamb**
- 2299- February Ewe Lamb**
- 2300- February Ewe Lamb**
- 2301- March Ewe Lamb**

Above Entries, Information Sale Day

Consigned By

## VIKING SHOW LAMBS

Terry Knudson  
1634 E 1000 N - Morristown, IN 46161  
(812)871-5700  
vikingshowlambs@gmail.com  
vikingshowlambsandgenetics.com

- 2302- February Ram Lamb**

Information Sale Day

Consigned By

## ESTES SHOW LAMBS

Ryan, Mona Lisa,  
Hop and Debbie Estes  
9823 E Belmont Ave - Sanger, CA 93657  
(559) 301-3241  
petterssonfarms@hotmail.com  
estesshowlambs.com

- 2303- February Ewe Lamb**
- 2304- February Ewe Lamb**

Above Entries, Information Sale Day



# HAMPSHIRE WS/WD



Res Champion Hampshire Wether Dam,  
Res Junior Champ, 1st March Ewe Lamb from  
Ellerbrock Club Lambs sold to California at \$4,500.

*Consigned By*

## TRIPLE J CLUB LAMBS

Jarrett Webb  
3320 E 2620 S - Saint George, UT 84790  
(435) 668-6638  
Triplej\_clublambs@hotmail.com  
triplejclublambs.com

**2305- Yearling Ram**

**2306- February Ram Lamb**

**2307- Yearling Ewe**

**2308- January Ewe Lamb**

**2309- February Ewe Lamb**

Above Entries, Information Sale Day

*Consigned By*

## SRV SHOW LAMBS

James Humphrey  
607 East Hwy 81 - Burley, ID 83318  
(406) 533-9807  
jhumpy33@hotmail.com  
SRVlivestock.com

**2310- February Ewe Lamb**

Information Sale Day

*Consigned By*

## HARRELL CLUB LAMBS

Joe Harrell & Tyler Rhoads  
24848 W Gore Blvd  
Indiahoma, OK 73552  
(580) 695-1767- (580) 591-1091  
Amyrhoads29@yahoo.com  
joeharrellclublambs.com

**2311- Yearling Ram**

**2312- January Ram Lamb**

**2313- March Ram Lamb**

**2314- Yearling Ewe**

**2315- Yearling Ewe**

**2316- February Ewe Lamb**

**2317- March Ewe Lamb**

**2318- March Ewe Lamb**

**2319- April Ewe Lamb**

**2320- April Ewe Lamb**

Above Entries, Information Sale Day





**E-I-E-I-O... Find the hidden objects in the farm picture below.**

Apple  
Carrot  
Corn

Pitchfork  
Sheep  
Rooster

Wagon Wheel  
Hay  
Rabbit

The One and Only  
**MIDWEST**  
STUD RAM SALE

*Fun & Games*



[www.midwestsale.com](http://www.midwestsale.com)

**Bonus Activity...  
Color the farm picture!**



# NATURAL COLORED WS/WD



Champion Natural Colored Wether Sire,  
1st March Ram Lamb from Harms Show Lambs  
sold to Ohio at \$2,700.

Consigned By

## BLUME CLUB LAMBS

Brandon, Steven & Megan Blume  
2225 Co Rd A - Mineral Point, WI 53565  
(608) 341-6302  
blumer1989@hotmail.com  
blumeclublambs.com

### 2321- March Ram Lamb

### 2322- April Ewe Lamb

Above Entries, Information Sale Day

Consigned By

## JOHNSON FAMILY SHOW STOCK

W 8778 Kilkenney Rd - Delavan, WI 53115  
(608) 289-5686 (260) 609-7369  
johnsonfamilyshowstock@gmail.com  
johnsonfamilyshowstock.com

### 2323- March Ram Lamb

### 2324- February Ewe Lamb

### 2325- March Ewe Lamb

Above Entries, Information Sale Day

Consigned By

## HARMS SHOW LAMBS

Larry & Barb Harms  
27638 E 2450 N Rd - Lexington, IL 61753  
(309) 825-3485  
hrmsshwlmb@prairieinet.net  
harmsshowlambs.com

### 2326- April Ram Lamb

Harms Y589 ST 1389

B: 04/05/2017 Twin

S: T-Bird HSL 75

D: Bullet Proof 8458

T-Bird is our keeper Chicken Hawk son. x Angry  
Bird RR/NN. Bullet Proof 8458 is also RR/NN.

Consigned By

## MENNEN CLUB LAMBS

Brent Mennen  
7123 E CR 250 S - Walton, IN 46994  
(765) 437-6020 (574) 735-3719  
mennenclublambs@aol.com  
mennenclublambs.com

### 2327- April Ram Lamb

Information Sale Day

Consigned By

## KEITZER CLUB LAMBS

Kaci Keitzer  
14901 240th St - Mediapolis, IA 52637  
(319) 572-4247  
kacikeitzer@gmail.com

### 2328- March Ewe Lamb

Information Sale Day

Consigned By

## KNAPP SISTERS CLUB LAMBS

Hannah Knapp  
21623 312th St - Bloomfield, IA 52537  
(641) 208-5609  
hsknapp13@gmail.com

### 2329- February Ewe Lamb

Information Sale Day

Consigned By

## WRIGHTS ROCKY ACRES

Don & Alicia Wright  
25250 State Hwy 413 - Galena, MO 65656  
(417) 437-7381 (417) 236-2010  
wrightsrockyacres@hotmail.com  
wrightsrockyacres.com

### 2330- February Ewe Lamb

### 2331- April Ewe Lamb

Above Entries, Information Sale Day

Consigned By

## TURNER SHOW STOCK

Andy & Jeribeth Turner  
1220 Hynds Ranch Rd - VanAlstyne, TX 75495  
(254) 290-0420 (903) 816-1208  
turnershowstock@gmail.com  
turnershowstock.com

### 2332- March Ewe Lamb

Information Sale Day

Consigned By

## HILL COUNTRY SHOW LAMBS

Rodney Yates  
PO Box 1491 - Boerne, TX 78006  
(830) 446-9031  
hcsyates@yahoo.com  
hillcountrysoffolks.com

### 2333- Yearling Ewe

Information Sale Day

Consigned By

## RULE SHEEP COMPANY

Tyson Rule  
PO Box 27 - Hawarden, IA 51023  
(712) 422-0344 (712) 552-2499  
tysonrule@hotmail.com  
rulesheep.com

### 2334- March Ram Lamb

### 2335- March Ram Lamb

Above Entries, Information Sale Day  
Check our website for updates on specific ped-  
igrees and lot information. sheep will be sired  
by Drop the Mic, OCD, Artic Invasion, Shank  
N Bake, Kobra Kai, Rogue Nation, and Angry  
Dragon.

Consigned By

## KENNEDY LIVESTOCK

Matt, Jalene & Flint Kennedy  
17994 Richland Rd - Kirksville, IA 52566  
(979) 224-0081  
matt.kennedy147@gmail.com  
kennedyclublambs.com

### 2336- March Ram Lamb

Information Sale Day

Consigned By

## MCLAUGHLIN GRIFFIN SHEEP

Willard McLaughlin  
400 CR 220 - Craig, CO 81625  
(970) 629-0263 (970) 629-5982  
mclaughlinsheep@gmail.com

### 2337- Fall Ram Lamb

### 2338- March Ewe Lamb

Above Entries, Information Sale Day

Consigned By

### SLACK CLUB LAMBS

Tom Slack  
1022 W 1300 N  
North Manchester, IN 46962  
(260) 750-7399 (260) 982-8714  
luvmysheep@aol.com  
slackclublambs.com

**2339- January Ram Lamb**

**2340- February Ewe Lamb**

Above Entries, Information Sale Day

Consigned By

### BURKETT CLUB LAMBS

Mason Burkett  
2207 185th St - Grand Junction, IA 50107  
(515) 370-5704  
burkettma@greencountycsd.net

**2341- February Ewe Lamb**

Information Sale Day

Consigned By

### WEST COAST CLUB LAMBS

Tom East & Gary Nix  
9680 Eastside Potter Valley Rd  
Potter Valley, CA 95469  
(707) 354-4369  
eastcovel@yahoo.com  
westcoast-clublambs.com

**2342- March Ram Lamb**

West Coast 758

B: 03/12/2017

S: West Coast 661

D: Sampson 608

*Sire will be in Sedalia and was the last ram born last year. He is wide based, thick topped and a tremendous stifle. The mother of 758 is a BUSHWACKER daughter we bought from Harry Sampson in Reno.*

**2343- February Ewe Lamb**

West Coast 745

B: 02/17/2017

S: Weger 0240 SCOOBY

D: West Coast 627 62406D

*SCOOBY is a LOG RAT son x Pagliaros GOLDIE ewe. We leased SCOOBY this year and got some exceptional lambs. They are big footed, stout, upfronted and wide based with a lot of shag.*

Consigned By

### SRV SHOW LAMBS

James Humphrey  
607 East Hwy 81 - Burley, ID 83318  
(406) 533-9807  
jhumpy33@hotmail.com  
SRVlivestock.com

**2344- March Ewe Lamb**

Information Sale Day

# NATURAL COLORED WS/WD

Consigned By

### HINDMAN SHOW LAMBS

Mike Hindman  
1648 640th Ave - Albia, IA 52531  
(515) 491-7829  
hindmanlamb@yahoo.com

**2345- March Ewe Lamb**

Information Sale Day

Consigned By

### DIAMOND D SHOW STOCK

Tyler Homann  
915 CR 350 E - Neoga, IL 62447  
(217) 962-1356  
tylerhomann@yahoo.com

**2346- Yearling Ewe**

**2347- Yearling Ewe**

**2348- Yearling Ewe**

Above Entries, Information Sale Day

Consigned By

### CRAIG FAMILY LIVESTOCK

Jason Craig  
48757 44th St - Paw Paw, MI 49079  
(269) 598-2752 (269) 267-7920  
lisa.craig@mpiresearch.com

**2349- April Ewe Lamb**

Information Sale Day

Consigned By

### WISE CLUB LAMBS

Todd Wise  
1825 Weld CR 59 - Keenesburg, CO 80643  
(303) 512-3864  
wiseliril@gmail.com  
wiseclublambs.com

**2350- March Ewe Lamb**

Information Sale Day

Consigned By

### ALLISON MCGOLDEN CLUB LAMBS

Chris McGolden  
PO Box 744 - Arapaho, OK 73620  
(580) 331-7198  
cmcgolden@hotmail.com  
allisonmcgoldenclublambs.com

**2351- Yearling Ewe**

Information Sale Day



Champion Natural Colored Wether Dam,  
1st Yearling Ewe from Hill Country Show Lambs  
sold to Indiana at \$1,100.

Consigned By

### WOLF CLUB LAMBS

Dave Wolf  
957 E Ave - Scranton, IA 51462  
(712) 830-3625 (712) 652-3887  
mcpope@netins.net  
wolfclublambs.com

**2352- March Ewe Lamb**

Information Sale Day

Consigned By

### ESTES SHOW LAMBS

Ryan, Mona Lisa,  
Hop and Debbie Estes  
9823 E Belmont Ave - Sanger, CA 93857  
(559) 301-3241  
petterssonfarms@hotmail.com  
estesshowlambs.com

**2353- Fall Ewe Lamb**

**2354- March Ewe Lamb**

Above Entries, Information Sale Day



# SUFFOLK WS/WD



Champion Suffolk Wether Sire,  
1st Yearling Ram from Slack Club Lambs  
sold to Pennsylvania at \$3,100.



Reserve Champion Suffolk Wether Sire,  
1st January Ram Lamb from  
Slack Club Lambs sold to Texas at \$1,500.

Consigned By

## J-L LIVESTOCK

Lochie Hosch  
PO Box 419 - Salado, TX 76571  
(972) 921-4081  
lochie.hosch@gmail.com

### 2361- Yearling Ram

Nicholson 1604 642967  
B: 04/11/2016 Triplet  
S: Viking Lamb 5414 637784  
D: Hill Country 247-09 598124

Consigned By

## WRIGHTS ROCKY ACRES

Don & Alicia Wright  
25250 State Hwy 413 - Galena, MO 65656  
(417) 437-7381 (417) 236-2010  
wrightsrockyacres@hotmail.com  
wrightsrockyacres.com

### 2362- February Ram Lamb

### 2363- February Ewe Lamb

### 2364- February Ewe Lamb

Above Entries, Information Sale Day

Consigned By

## PIRTLE FARMS

Randy & Susan Pirtle  
397271 W 400 Rd - Copan, OK 74022  
(918) 440-4553 (918) 440-5991  
pcopan1@aol.com  
pirtlefarms.com

### 2365- Yearling Ram

### 2366- February Ram Lamb

### 2367- March Ram Lamb

### 2368- April Ram Lamb

### 2369- Yearling Ewe

### 2370- Yearling Ewe

### 2371- Yearling Ewe

### 2372- February Ewe Lamb

### 2373- March Ewe Lamb

### 2374- April Ewe Lamb

Above Entries, Information Sale Day

These yearling ewes are bred just like the  
Champion Ewes at the Tulsa State Fair in 2014,  
2015, and 2016.

Consigned By

## HILL COUNTRY SHOW LAMBS

Rodney Yates  
PO Box 1491 - Boerne, TX 78006  
(830) 446-9031  
hcsyates@yahoo.com  
hillcountryshowlamb.com

### 2375- Yearling Ewe

Information Sale Day

Consigned By

## MCLAUGHLIN GRIFFIN SHEEP

Willard McLaughlin  
400 CR 220 - Craig, CO 81625  
(970) 629-0263 (970) 629-5982  
mclaughlinsheep@gmail.com

### 2376- Yearling Ram

### 2377- February Ram Lamb

### 2378- March Ram Lamb

### 2379- March Ram Lamb

### 2380- January Ewe Lamb

### 2381- February Ewe Lamb

### 2382- February Ewe Lamb

### 2383- March Ewe Lamb

### 2384- March Ewe Lamb

### 2385- April Ewe Lamb

Above Entries, Information Sale Day

Consigned By

## NOC SHEEP CENTER

Bart Cardwell, Herdsman  
1220 E Grand, PO Box 310  
Tonkawa, OK 74653  
(580) 716-2550  
bart.cardwell@noc.edu  
noc.edu/agriculture.sciences

### 2386- Yearling Ewe

Information Sale Day

Consigned By

## ESTES SHOW LAMBS

Ryan, Mona Lisa,  
Hop and Debbie Estes  
9823 E Belmont Ave - Sanger, CA 93657  
(559) 301-3241  
petterssonfarms@hotmail.com  
estesshowlamb.com

### 2387- March Ram Lamb

### 2388- March Ewe Lamb

Above Entries, Information Sale Day



Consigned By

**MSB SHOW LAMBS**

Ralph & Melanie Horchler  
238 Busy Ln - New Wilmington, PA 16142  
(724) 651-6757 (724) 533-9925  
msbsuffolks@embarqmail.com  
msbsuffolks.com

**2389-Yearling Ewe**

**2390-Yearling Ewe**

**2391- January Ewe Lamb**

**2392- February Ewe Lamb**

**2393- March Ewe Lamb**

Above Entries, Information Sale Day

Consigned By

**FOSTER FARMS**

Riley Foster  
2130 Faculty Row - Muskogee, OK 74403  
(918) 441-5775  
fosteralanjoe@gmail.com

**2394- Yearling Ewe**

**2395- Yearling Ewe**

**2396- Yearling Ewe**

Information Sale Day

*Stout made wether ewes that have that sleek  
Suffolk look.*

Consigned By

**TROXTELL/BROCKELMAN**

Terrye Troxtell/Hunter Brockelman  
455 Biggerstaff Rd - Sherman, TX 75090  
(903) 821-3985  
troxjone@aol.com

**2397- Yearling Ram**

**2398- Yearling Ewe**

**2399- Yearling Ewe**

**2400- Yearling Ewe**

**2401- Fall Ewe Lamb**

**2402- April Ewe Lamb**

Above Entries, Information Sale Day

# SUFFOLK WS/WD

Consigned By

**ALLISON MCGOLDEN  
CLUB LAMBS**

Chris McGolden  
PO Box 744 - Arapaho, OK 73620  
(580) 331-7198  
cmcgolden@hotmail.com  
allisonmcgoldenclublambs.com

**2403- Yearling Ewe**

Information Sale Day

Consigned By

**SLACK CLUB LAMBS**

Tom Slack  
1022 W 1300 N  
North Manchester, IN 46962  
(260) 750-7399 (260) 982-8714  
luvmysheep@aol.com  
slackclublambs.com

**2404- Yearling Ram**

**2405- December Ram Lamb**

**2406- January Ram Lamb**

**2407- February Ram Lamb**

**2408- March Ram Lamb**

**2409- Yearling Ewe**

**2410- December Ewe Lamb**

**2411- January Ewe Lamb**

**2412- February Ewe Lamb**

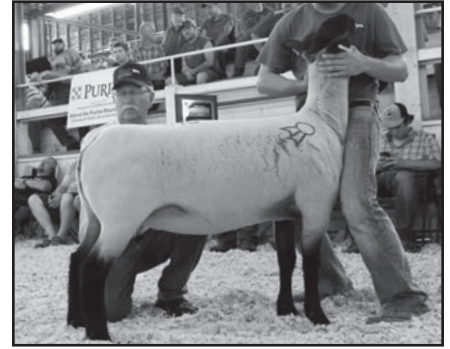
**2413- March Ewe Lamb**

**2414- March Ewe Lamb**

**2415- March Ewe Lamb**

**2416- April Ewe Lamb**

Above Entries, Information Sale Day



Champion Suffolk Wether Dam,  
1st Yearling Ewe from Slack Club Lambs  
sold to Pennsylvania at \$5,000.



**ROYAL~S**  
*Graphic Design Services*

DALE L. SMITH  
Owner/Graphic Designer  
royal-s@earthlink.net

  
Find us on  
Facebook

*Specializing in the Livestock Industry!*

17917 Brim Road  
Bowling Green, OH 43402  
419.308.8418

# CONSIGNOR INDEX

## Columbias - page 36

BORCHER SHEEP CO .....	Powell, WY .....	23-26
DEW DROP FARM.....	New York Mills, MN .....	11-13
KUEHNE COLUMBIAS & COLOREDS.....	Reading, MN .....	14-16
PETERSON SHEEP COMPANY .....	Lemmon, SD.....	17-20
RASPBERRY MEADOWS .....	Leasburg, MO.....	21-22

## Corriedales - page 37

DEW DROP FARM.....	New York Mills, MN .....	54-56
FEDERER CORRIEDALES .....	Cheyenne, WY.....	45-50
MORRIS CORRIEDALES.....	Lerna, IL.....	51-53
PHILLIPPI CORRIEDALES .....	Hammond, MT.....	41-44

## Dorpers - start on page 38

APRICOT LANE FARMS .....	Moorpark, CA.....	72-80
COYOTE CREEK FARMS.....	Siloam Springs, AR .....	81-83
DEER RUN RANCH.....	Mountain Grove, MO.....	113-117
DRY CREEK DORPERS.....	Leesburg, OH .....	102-107
HIJO DORPERS.....	Amity, OR .....	61-70
KENTUCKY PROUD DORPERS.....	Kirkey, KY .....	108-111
LOBDELL DORPERS .....	Freeport, IL .....	71
MISSOURI DORPERS.....	Albany, MO.....	85-87
MIRROR C LIVESTOCK .....	Millsap, TX.....	88-98
RIVERWOOD FARMS.....	Powell, OH.....	99-101
TRIPLE E DORPERS .....	Paris, MO.....	84
TWISTED ASH FARM & DAIRY .....	Foristell, MO .....	112

## White Dorpers - start on page 41

AFTON HILLS FARM .....	Afton, MN .....	176-183
BUCKEYE ACRES .....	VanWert, OH.....	121-124
CIRCLE R FARMING .....	Rosedale, VA .....	132-133
HIJO DORPERS.....	Amity, OR .....	134-143
JB J LIVESTOCK .....	Brighton, MO .....	155-159
L & K SHEEP.....	Jenera, OH.....	152-154
LEWIS WHITE DORPERS.....	Bonanza, OR.....	160-168
MISSOURI DORPERS.....	Albany, MO.....	128-131
MIRROR C LIVESTOCK .....	Millsap, TX.....	125-127
PLEASANT VIEW FARM .....	Diller, NE.....	144-146
RED RAVEN ACRES .....	Ravenswood, MO.....	169-170
RIVERWOOD FARMS.....	Powell, OH.....	171-175
THORESON SHEEP FARM.....	Zumbrora, MN .....	147-151

## Horned Dorsets - page 44

CASELL HORNED DORSETS .....	Wytheville, VA.....	196-200
GALLEHER FARMS.....	Mt Gilead, OH.....	201-204
KENDRICK DORSETS .....	Vermont, IL .....	205-208
PATOKA VALLEY SHEEP.....	Princeton, IN .....	191-193
SINK SOUTHDOWNS & HORNED DORSETS .....	Kirklin, IN.....	194-195

## Polled Dorsets - start on page 46

ALDRICH, DUANE .....	DeSmet, SD .....	246-248
ARNDT ACRES.....	Norwood, MN .....	266-270
C & J LIVESTOCK .....	Polo, MO .....	285
CEDAR LANE DORSETS .....	Manawa, WI.....	217-222
DOTY DORSETS.....	Lovington, IL.....	282-284
FLINCHUMS POLLED DORSETS .....	Longmont, CO .....	211-214
FLINCHUM, JOHN GORDON .....	Longmont, CO .....	215
FLINCHUM, ELIZABETH .....	Longmont, CO .....	216
FRUECHTE FAMILY DORSETS .....	White, SD .....	234-238
LAUDEN ACRES.....	Dalmatia, PA.....	226-233
MCCARTHY DORSETS.....	Sycamore, OH .....	223-225
NICHOLS SHEEP FARM .....	Jerseyville, IL .....	243-245
NORTHERN STARR LIVESTOCK .....	Lonsdale, MN .....	280-281
PENN VIEW FARM.....	Blairsville, PA .....	256-259
PETERSON SHEEP COMPANY .....	Lemmon, SD.....	277-278
POPE DORSETS.....	Greenfield, IN.....	260-263
RED BARN FAMILY FARM .....	St Michael, MN .....	265
SANFORD DORSETS & HAMPS .....	Faribault, MN .....	271-276
SPILDE FARMS .....	Stoughton, WI.....	264
TURTLE MEAD POLLED DORSETS .....	Sinking Spring, PA.....	239-242
WESTWIND FARM - ANDERSON FAMILY.....	Hustonville, KY .....	279
WOLKOW DORSETS .....	DeSmet, SD .....	249-255

## Catalog PDF and Online Searchable Catalog:

Copy of this catalog can be found online at  
[www.midwestsale.com](http://www.midwestsale.com)

You also have the option of an online searchable catalog to make finding sections of entries by breed or class easier.

## Penning Charts:

Pen assignments are not included in this catalog to allow for timely printing and mailing. They will be accessible at

[www.midwestsale.com](http://www.midwestsale.com)

and posted in barns...

all pens will be tagged upon consignor arrival as well.

**watch live streamed shows & sales at [www.dvauction.com](http://www.dvauction.com)**

# CONSIGNOR INDEX

## Hampshires - start on page 52

ALF HAMPSHIRE	Edgerton, WI	423-425
BIRSCHBACH HAMPSHIRE	Fond du Lac, WI	327-330
BOBENDRIER BOYS	Pipestone, MN	308-310
BOBENDRIER HAMPSHIRE	Pipestone, MN	345-351
BORCHER SHEEP CO	Powell, WY	301-305
CHAR-LAND FARMS	Woodburn, OR	317
DEAKIN FAMILY FARMS	Cuba, IL	426-429
DEZEEUW FARM	Elkton, SD	395-397
FLEENER CLUB LAMBS	Biglerville, PA	331-333
FLEENER LIVESTOCK	Robesonia, PA	405-408
GILLMORE-DAVISON HAMPSHIRE	Wichita, KS	360-361
HAND HAMPSHIRE	DeSoto, MO	311-312
HELD HAMPSHIRE	Aurora, SD	411-416
HERRIG FAMILY	Slayton, MN	318-321
HIGHLAND HAMPSHIRE	Harlan, IA	355-359
HOUGHTALING HAMPS	Doland, SD	322-326
HOWELL CLUB LAMBS	Celina, OH	430
KENDRICK DORSETS & HAMPS	Vermont, IL	409-410
KIRSCHTEN SHEEP FARM	Alton, IA	352
MARSHALL SHEEP CO	Arlington, SD	306-307
MERRILL, REID	Canby, MN	380
MUMM HAMPSHIRE	White Heath, IL	400-404
NELSON HAMPS	Eaton, CO	417-420
NICHOLS SHEEP FARM	Jerseyville, IL	388-392
NOC SHEEP CENTER	Tonkawa, OK	378-379
NORTHERN EXPOSURE LIVESTOCK	Dodge Center, MN	353-354
PARR HAMPSHIRE	Mason City, IL	362-371
PETERSON SHEEP COMPANY	Lemmon, SD	381-387
PINE LAWN FARM	Holland, MN	372-377
PLAZA LIVESTOCK	Agency, MO	334-344
RABBIT CREEK SHEEP FARM	Elko, NV	316
SANFORD DORSETS & HAMPS	Fairbault, MN	393-394
SPOONSTER HAMPS	Eolia, MO	421-422
WAGGONER HAMPSHIRE	Cole Camp, MO	313-315
WILLWERTH & FAMILY, RB	Webster City, IA	398-399

## ADDITIONAL ENTRIES MAY HAVE BEEN RECEIVED AFTER DEADLINE FOR PRINTED CATALOG.

Late entries accepted until 24 hours before respective show. They will not be included in the printed or pdf version of this catalog, but can be found in the online searchable catalog found at [www.midwestsale.com](http://www.midwestsale.com)

## Katahdins - start on page 60

ASPEN MOUNTAIN KATAHDINS	Butte, MT	602
BB FARMS	Woodbine, MD	590-601
BUCKEYE ACRES	VanWert, OH	515-522
CRAIG FARMS KATAHDINS	Decatur, MI	482-491
D & J SMITH KATAHDINS	Earl Park, IN	476-481
DOSCH TMD KATAHDINS	Frederick, SD	579
DYER FAMILY KATAHDINS	Chrisney, IN	537-543
FRANCIS FAMILY FARMS	Paris, MO	469-474
HANCOCK KATAHDINS	Noble, IL	475
HARKER FARMS	Mountain Grove, MO	492
JULIAN AND MOORE SHEEP	Rootstown, OH	527-536
KRK KATAHDINS	Hubbard, OR	544-548
LAZY B LIVESTOCK	Prague, OK	549-553
LIMERICK FARMS	Tipton, OK	449-453
LUZON FARM	Bonnots Mill, MO	523-526
PIPESTONE KATAHDINS	Pipestone, MN	494-512
POYNTER SHEEP FARM	Paris, IL	554-560
PRAIRIE LANE FARM	Centralia, MO	561-576
PRAIRIE LANE FARM - COOPER GEHRING	Centralia, MO	577-578
PROFFITT LIVESTOCK FARM	Richmond, MO	603-604
RACK OF LAMB CORRAL	Windorn, KS	461-468
RIVIERA	Cable, OH	580-589
SILVER MAPLE SHEEP FARM	Rose Hill, VA	605-610
SPRABERRY ACRES	Royce City, TX	441-444
STURDY POST RANCH	Ward, SD	454-460
TREBBE, JUSTIN	Fort Pierre, SD	493
WEAVER, DOYLE	Nevada, MO	513-514
WINDER, CLAY	Butler, MO	445-448

## Montadales - start on page 68

A & A LIVESTOCK	New Holland, IL	621-624
ABELL-MURDOCK MONTADALES	Aurora, OR	676-677
BAUGH & DUNN, INC.	Middletown, MO	644-648
CLAYMAN MONTADALES	Hutchinson, KS	628-635
EKERN MONTADALES	Mexico, MO	682-684
JACOBSEN RANCH	LeGrand, CA	658-663
MARSHALL SHEEP FARM	Monticello, IL	668-672
MILLER FARMS	Bruce, SD	636-643
MUMM MONTADALES	White Heath, IL	673-675
MY MONTADALES	Brookings, SD	625-626
PETEFISH MONTADALES	Virginia, IL	655-657
POPPEN MONTADALES	DeSmet, SD	649-654
RHOADES MONTADALES	Centralia, MO	678-681
SALFNER MONTADALES	Warwick, MD	627
VANHORN, JANSYN	Garfield, KS	664-667

[www.midwestsale.com](http://www.midwestsale.com)



# CONSIGNOR INDEX

## Natural Coloreds - page 71

BAR J BAR RANCH .....	Box Elder, SD .....	704-706
BORCHER SHEEP CO .....	Powell, WY .....	709-711
KNUTSON SUFFOLKS & RAMBOUILLETS .....	Centerville, SD .....	714
KUEHNE COLUMBIAS & COLOREDS .....	Reading, MN .....	707-708
KUYKENDALL, KATHERINE .....	Richland Center, WI .....	703
MORRIS NATURAL COLOREDS .....	Lerna, IL .....	712-713
PINES END NATURAL COLOREDS .....	Watkins, MN .....	701
PURPLE RIBBON FARMS .....	Arcola, IL .....	702
SCHMIDT BROTHERS FARM .....	Centralia, MO .....	715-718

## Polypays - start on page 72

BIG PRAIRIE POLYPAYS .....	Ashton, IL .....	755-756
L & K SHEEP .....	Jenera, OH .....	731-739
SHADY LANE POLYPAYS .....	Canby, MN .....	740-746
SHADY LAWN POLYPAYS .....	Eldridge, IA .....	751-754
SHAPIRO FAMILY FARMS, LLC .....	Colorado Springs, CO .....	747-749
VAN WELL POLYPAYS .....	Watertown, SD .....	750

## Rambouillets - start on page 74

AVONDALE FARM .....	Maplewood, OH .....	761-762
BAR J BAR RANCH .....	Box Elder, SD .....	770-775
BENZ RAMBOUILLET .....	St Marys, KS .....	776-779
BRINKMAN SHEEP FARM .....	Goodhue, MN .....	795-796
BORCHER SHEEP CO .....	Powell, WY .....	764-766
CRAWFORD RAMBOUILLETS .....	Pipestone, MN .....	784-787
DEW DROP FARM .....	New York Mills, MN .....	781-783
INBODY BROTHERS RAMBOUILLETS .....	Bluffton, OH .....	789-790
KIRKPATRICK RAMBOUILLETS .....	Ashland, OH .....	780
KNUTSON SUFFOLKS & RAMBOUILLETS .....	Centerville, SD .....	788
L & K SHEEP .....	Jenera, OH .....	763
MARSHALL SHEEP COMPANY .....	Arlington, SD .....	767-769
REGEHR SHEEP .....	Marion, SD .....	791-794

## Shropshires - start on page 76

CITY LIMITS SHEEP FARM .....	LaMoille, IL .....	817-818
COLE CLUB LAMB .....	Elk City, OK .....	801-806
EBERT SHEEP FARM .....	St George, KS .....	821-824
FLEENER LIVESTOCK .....	Robesonia, PA .....	842-843
HEEGS CRAZY H CLUB LAMBS .....	Shepherd, MT .....	810-811
NELSON FAMILY SLs & SOUTHDOWNS .....	Tribune, KS .....	825-826
OUTLAW SHEEP COMPANY .....	El Dorado Springs, MO .....	837-838
PARR HAMPS .....	Mason City, IL .....	839-841
RIFE SHROPSHIRE .....	Yellow Springs, OH .....	827-836
ROKAJO .....	Marshfield, MO .....	819-820
SLACK CLUB LAMBS .....	North Manchester, IN .....	812-816
TROXTELL/BROCKELMAN .....	Sherman, TX .....	807-809

## Southdowns - start on page 78

A & M RANCH .....	Sandwich, IL .....	900-902
B & G LIVESTOCK .....	Wytheville, VA .....	937-938
BECKMIER BROS .....	Atwood, IL .....	974-976
BECKMIER LIVESTOCK .....	Morrisonville, IL .....	985-986
BOWMAN SOUTHDOWNS .....	Blandinsville, IL .....	952-955
BRINKMAN SHEEP FARM .....	Goodhue, MN .....	982-984
BULLINGTON SOUTHDOWNS .....	Brookings, SD .....	903-908
BURNS STOCK FARM .....	Flora, IN .....	894-899
COLE CLUB LAMBS .....	Elk City, OK .....	892-893
DAVIS SOUTHDOWNS & CLUB LAMBS .....	Odell, IL .....	956-961
FORSEE SOUTHDOWNS .....	Owenton, KY .....	886-891
GOPHER CLUB LAMBS .....	Lakefield, MN .....	874-881
HAMERLINCK FARMS .....	Reynolds, IL .....	947-949
HIGHLAND HAMPSHIRE .....	Harlan, IA .....	864
JUNGE SHEEP FARM .....	Cleburne, TX .....	942-946
KNITTEL LIVESTOCK .....	Greenfield, IL .....	987-989
LABER LIVESTOCK .....	Longmont, CO .....	970-973
LIS LIVESTOCK .....	Jacksboro, TX .....	977-981
MADDOX SOUTHDOWNS .....	Thomas, OK .....	914-931
McELVAIN SHEEP FARM .....	Heyworth, IL .....	870-873
NORTHERN STARR LIVESTOCK .....	Lonsdale, MN .....	990-994
OLSON, LEE & CHERRY .....	New Virginia, IA .....	939-941
PARMELY FAMILY SOUTHDOWNS .....	Brookings, SD .....	932-934
RISING SON SOUTHDOWNS .....	Coleridge, NE .....	968-969
RINCKER SOUTHDOWNS .....	St Johns, MI .....	935-936
SHADY LAWN POLYPAYS .....	Eldridge, IA .....	882-885
SINK SOUTHDOWNS & HORNED DORSETS .....	Kirklin, IN .....	909-913
THE UNIV OF FINDLAY .....	Findlay, OH .....	851-863
TNT SOUTHDOWNS .....	Edgerton, MN .....	950-951
VALLEY VIEW FARM/ MILLER BROS SOUTHDOWNS .....	Estelline, SD .....	962-967
WIERZBICKI SOUTHDOWNS .....	Excelsior Springs, MO .....	865-867
WEDEL SOUTHDOWNS .....	Moundridge, KS .....	868-869

## Catalog PDF and Online Searchable Catalog:

Copy of this catalog can be found online at  
**[www.midwestsale.com](http://www.midwestsale.com)**

You also have the option of an online searchable catalog to make finding sections of entries by breed or class easier.

## Penning Charts:

Pen assignments are not included in this catalog to allow for timely printing and mailing. They will be accessible at

**[www.midwestsale.com](http://www.midwestsale.com)**

and posted in barns...

all pens will be tagged upon consignor arrival as well.

# CONSIGNOR INDEX

## Suffolks - start on page 84

4 Js & a T .....	Wauseon, OH .....	1096
ANNUSCHAT FARMS LLC .....	Okarche, OK .....	1103-1114
ARNDT ACRES .....	Norwood, MN .....	1080-1084
BRAASCH LAND & LIVESTOCK .....	Elwood, NE .....	1041-1043
CAHILL FARMS .....	Brimfield, IL .....	1151-1155
CORSON SUFFOLKS .....	Macomb, IL .....	1011-1021
COUSINS SUFFOLKS .....	Lemmon, SD .....	1132-1135
DOMBEK FAMILY, RANDY .....	Ivanhoe, MN .....	1025-1030
FISHER SUFFOLKS .....	Urbandale, IA .....	1136-1141
FOSTER FARMS .....	Muskogee, OK .....	1172
FIVE STAR J FARMS .....	Patoka, IN .....	1051-1062
FROSTAIR FARM .....	Bloomington, OH .....	1022-1024
HOSKINS STOCK FARM .....	Jefferson, IA .....	1156-1157
KEEVER SUFFOLKS .....	Media, IL .....	1074-1079
KJELDGAARD FARMS .....	Takamah, NE .....	1167-1171
KNUTSON SUFFOLKS & RAMOUILLETS .....	Centerville, SD .....	1142-1150
LOST RIVER LIVESTOCK .....	Rigny, ID .....	1001-1010
LUXFORD RANCH .....	Wilsall, MT .....	1097-1100
MACCAULEY SUFFOLKS .....	Atglen, PA .....	1067
MID-SID FARM .....	Scheharie, NY .....	1158-1160
NOTHERN EXPOSURE LIVESTOCK .....	Dodge Center, MN .....	1115-1131
OAK HILL FARM .....	Julian, NE .....	1162-1165
PRAIRIE ROSE SUFFOLKS .....	Philipsburg, CA .....	1071-1073
RENN VUE FARMS .....	Pigeon, MI .....	1068-1070
ROSENBOOM SUFFOLKS .....	Clifton, IL .....	1036
ROYER FARM .....	Washington, IL .....	1161
RUBY MOUNTAIN SHEEP COMPANY LLC .....	Spring Creek, NV .....	1085-1092
SADDLE CREEK SUFFOLKS .....	Tea, SD .....	1093-1095
SKARTVEDT FAMILY, WAYNE .....	Radcliffe, IA .....	1034-1035
STALZER SUFFOLKS .....	Zearing, IA .....	1166
SWINGIN T RANCH .....	Big Cabin, OK .....	1063-1066
TROXTELL/BROCKELMAN .....	Sherman, TX .....	1031-1033
VAN DYKE SUFFOLKS .....	Wessington Springs, SD .....	1044-1050
WHISPERING HILLS .....	Caldwell, ID .....	1037-1040
ZEHNDER FAMILY SUFFOLKS .....	Truman, MN .....	1101-1102

## Texels - start on page 92

ADAMS TEXELS .....	Morristown, IN .....	1246-1429
ARTESIAN VALLEY TEXELS .....	Harrogate, TN .....	1193-1195
BOKELMAN, MICHAEL .....	Greensburg, IN .....	1184-1185
CAMPBELL BROTHERS 2 .....	Waterford, OH .....	1188-1190
FISHER TEXELS .....	Payette, ID .....	1213-1231
LAMB CHOP HAVEN .....	Pine Island, MN .....	1181-1183
LIND, TRISTAN .....	Pine Bluffs, WY .....	1191-1192
MN TEXEL .....	Pine Island, MN .....	1186-1187
PINE KNOB FARM .....	Somers, CT .....	1207-1212
TAYLORS TEXELS .....	Osceola, IA .....	1232-1237
WATTS FARM .....	Geigertown, PA .....	1238-1245
WILCOX CLUB LAMBS .....	Leslie, MI .....	1196-1206

## Tunis - start on page 96

BRUNS TUNIS .....	Maria Stein, OH .....	1266-1269
CRAFT TUNIS .....	Flora, IN .....	1285-1289
DARLING TUNIS .....	East Liberty, OH .....	1276
MJM FAMILY FARM .....	Ottawa, OH .....	1264-1265
MURRY FARMS .....	Higginsville, MO .....	1272
RIVERWOOD FARMS .....	Powell, OH .....	1284
RQL FARMS .....	California, MO .....	1273-1275
SCHMIDT BROTHERS FARM .....	Centrillia, MO .....	1294-1297
SPLIDE FARMS .....	Stoughton, WI .....	1277-1281
STUMPE FARMS .....	Mexico, MO .....	1261-1263
STUMPE TUNIS .....	Russellville, MO .....	1282-1283
TRI-STAR STOCK FARM .....	Gilt Edge, TN .....	1270-1271
WESTWIND FARM - ANDERSON FAMILY .....	Hustonville, KY .....	1290-1293

## Entry Numbers at Catalog time...

<b>Columbia: 16</b>	<b>Rambouillet: 36</b>	<b>Club Lambs: 40</b>
<b>Corriedale: 16</b>	<b>Shropshire: 43</b>	<b>Crossbred WS/WD: 195</b>
<b>Dorper: 60</b>	<b>Southdown: 144</b>	<b>Dorset WS/WD: 156</b>
<b>White Dorper: 67</b>	<b>Suffolk: 172</b>	<b>Dorset Advantage WS/WD: 36</b>
<b>Hampshire: 130</b>	<b>Texel: 69</b>	<b>Speckle-Faced WS/WD: 17</b>
<b>Horned Dorset: 18</b>	<b>Tunis: 38</b>	<b>Hampshire WS/WD: 321</b>
<b>Polled Dorset: 75</b>		<b>Natural Colored WS/WD: 35</b>
<b>Katahdin: 171</b>		<b>Suffolk WS/WD: 56</b>
<b>Montadale: 63</b>		
<b>Natural Colored: 18</b>	<b>Total Cataloged Entries: 2020</b>	
<b>Polypay: 28</b>		

## ADDITIONAL ENTRIES MAY HAVE BEEN RECEIVED AFTER DEADLINE FOR PRINTED CATALOG.

Late entries accepted until 24 hours before respective show. They will not be included in the printed or pdf version of this catalog, but can be found in the online searchable catalog found at [www.midwestsale.com](http://www.midwestsale.com)

[www.midwestsale.com](http://www.midwestsale.com)

# WS/WD CONSIGNOR INDEX

## Club Lambs - start on page 110

ENFIELD CLUB LAMBS .....	Collins, IA .....	1509
FLEENER CLUB LAMBS .....	Biglerville, PA .....	1537
G & G CLUB LAMBS .....	Halifax, PA .....	1533-1534
HARMS SHOW LAMBS .....	Lexington, IL .....	1503-1505
HILL COUNTRY SHOW LAMBS .....	Boerne, TX .....	1515-1516
JOHNSTON CLUB LAMBS .....	New Plymouth, ID .....	1527
KNAPP SISTER CLUB LAMBS .....	Bloomfield, IA .....	1510-1512
KNOP FAMILY, FRED .....	Atlantic, IA .....	1517
MENNEN CLUB LAMBS .....	Walton, IN .....	1506-1508
MSB SHOW LAMBS .....	New Wilmington, PA .....	1535-1536
PERRY CLUB LAMBS .....	Montpelier, IN .....	1530-1532
PILGER CLUB LAMBS .....	Wallace, KS .....	1538-1540
RSO LIVESTOCK .....	Story City, IA .....	1514
SCHEEL LIVESTOCK .....	Alpena, SD .....	1501-1502
SOUTHERN PLAINS GENETICS .....	Cache, OK .....	1513
SRV SHOW LAMBS .....	Burley, ID .....	1518-1526
TURNER SHOW STOCK .....	VanAlstyne, TX .....	1528-1529

## Catalog PDF and Online Searchable Catalog:

Copy of this catalog can be found online at  
[www.midwestsale.com](http://www.midwestsale.com)

You also have the option of an online searchable catalog to make finding sections of entries by breed or class easier.

## Penning Charts:

Pen assignments are not included in this catalog to allow for timely printing and mailing. They will be accessible at

[www.midwestsale.com](http://www.midwestsale.com)  
 and posted in barns...

all pens will be tagged upon consignor arrival as well.

## ADDITIONAL ENTRIES MAY HAVE BEEN RECEIVED AFTER DEADLINE FOR PRINTED CATALOG.

Late entries accepted until 24 hours before respective show. They will not be included in the printed or pdf version of this catalog, but can be found in the online searchable catalog found at  
[www.midwestsale.com](http://www.midwestsale.com)

## Crossbred WS/WDs - start on page 112

ALEXANDER CLUB LAMBS .....	Winamac, IN .....	1731-1732
ALLEN SHOW LAMBS .....	Elk City, OK .....	1578-1579
BLUME CLUB LAMBS .....	Mineral Point, WI .....	1591-1596
BURCH LIVESTOCK .....	Seward, NE .....	1683-1684
BURKETT CLUB LAMBS .....	Grand Junction, IA .....	1689-1692
C & J LIVESTOCK .....	Polo, MO .....	1708
CRAIG FAMILY LIVESTOCK .....	Paw Paw, MI .....	1637
DIAMOND D SHOW STOCK .....	Neoga, IL .....	1703-1706
DREWRY CLUB LAMBS .....	Farmington, MN .....	1651
DREWRY CLUB LAMBS .....	Farmington, MN .....	1707
ELLERBROCK CLUB LAMBS .....	Atkinson, IL .....	1661-1680
ESTES SHOW LAMBS .....	Sanger, CA .....	1735-1736
FARROW HAMPSHIRE .....	Midland, TX .....	1569-1574
FLEENER CLUB LAMBS .....	Biglerville, PA .....	1644
G & G CLUB LAMBS .....	Halifax, PA .....	1638-1643
HARMS, BRIAN .....	Chatham, IL .....	1580-1581
HARMS SHOW LAMBS .....	Lexington, IL .....	1583-1590
HARRELL CLUB LAMBS .....	Indiahoma, OK .....	1737-1744
HINDMAN SHOW LAMBS .....	Albia, IA .....	1693-1699
JOHNSTON CLUB LAMBS .....	New Plymouth, ID .....	1645
KEITZER CLUB LAMBS .....	Mediapolis, IA .....	1597
KNAPP SISTERS CLUB LAMBS .....	Bloomfield, IA .....	1616-1620
KNOP FAMILY, FRED .....	Atlantic, IA .....	1601-1605
MENNEN CLUB LAMBS .....	Walton, IN .....	1575-1577
MIDDLESWORTH CLUB LAMBS .....	Fremont, IA .....	1621-1623
MSB SHOW LAMBS .....	New Wilmington, PA .....	1632-1634
NEFF LIVESTOCK .....	San Angelo, TX .....	1746-1755
NICKLES CLUB AMBS .....	Sycamore, OH .....	1709
O'BRIEN SHOW LAMBS .....	St Paul, KS .....	1681-1682
PETERSON CLUB LAMBS .....	Scranton, IA .....	1700-1702
PILGER CLUB LAMBS .....	Wallace, KS .....	1652-1660
ROOKSTOOL CLUB LAMBS .....	Wamego, KS .....	1745
SAPPINGTON LIVESTOCK .....	Hartsburg, MO .....	1733
SCHEEL LIVESTOCK .....	Alpena, SD .....	1582
SHAPIRO FAMILY FARMS, LLC .....	Colorado Springs, CO .....	1734
SIMPSON LIVESTOCK .....	Ault, CO .....	1635-1636
SLACK CLUB LAMBS .....	North Manchester, IN .....	1646-1650
SOUTHERN PLAINS GENETICS .....	Cache, OK .....	1610-1615
SRV SHOW LAMBS .....	Burley, ID .....	1720-1726
STONE CREEK FARMS .....	Chandler, OK .....	1598-1600
TEETERS CLUB LAMBS .....	Hillsboro, OH .....	1710
TURNER SHOW STOCK .....	VanAlstyne, TX .....	1624-1626
VIKING SHOW LAMBS .....	Morristown, IN .....	1727-1730
WEST COAST CLUB LAMBS .....	Potter Valley, CA .....	1685-1688
WISE CLUB LAMBS .....	Keenesburg, CO .....	1711-1719
WRIGHTS ROCKY ACRES .....	Galena, MO .....	1627-1631
WOLLERMAN SHOW LAMBS .....	Bingham, IL .....	1561-1568
WOODWARD CLUB LAMBS .....	Fletcher, OH .....	1606-1609



# WS/WD CONSIGNOR INDEX

## Dorset WS/WDs - start on page 118

ALLRED/ELLIOTT .....	Calumet, OK.....	1854
AMYX SHEEP FARM .....	Sanger, TX.....	1768-1779
BOEHM FAMILY CLUB LAMBS .....	Racine, MN.....	1855-1859
BRAMMER DORSETS .....	Seaman, OH.....	1837-1840
C & J LIVESTOCK .....	Polo, MO .....	1898-1901
COLE CLUB LAMBS .....	Elk City, OK .....	1761-1766
CREGO LIVESTOCK .....	Ft Collins, CO .....	1907-1908
DANIELS CLUB LAMBS .....	Portland, IN.....	1846-1849
DAVIS SOUTHDOWNS & CLUB LAMBS .....	Odell, IL .....	1911
DREIER LAROSH CLUB LAMBS .....	Newton, KS.....	1909-1910
ENFIELD CLUB LAMBS .....	Collins, IA .....	1806-1813
ERICKSON FAMILY FARM LLC .....	Stewartville, MN .....	1843-1845
GREINER CLUB LAMBS .....	Keota, IA.....	1767
HEAD FAMILY FARMS .....	Derby, IA.....	1834-1836
HEISDORFFER DORSETS .....	Sigourney, IA .....	1780-1783
HUNTRODS CLUB LAMBS .....	Collins, IA .....	1873-1882
JOHNSON CLUB LAMBS .....	Delavan, WI.....	1897
JOHNSTON CLUB LAMBS .....	New Plymouth, ID.....	1830
KIRSCHTEN SHEEP FARM .....	Alton, IA .....	1816-1821
MARTIN BROTHERS .....	Willard, OH.....	1883-1890
MYERS POLLED DORSETS .....	Rushsylvania, OH .....	1822-1829
NOC SHEEP CENTER .....	Tonkawa, OK.....	1872
NORTHERN STARR LIVESTOCK .....	Lonsdale, MN .....	1831-1833
PERRY CLUB LAMBS .....	Montpelier, IN.....	1841
PERRY CLUB LAMBS/CLAY RIDGE SHEEP CO .....	Montpelier, IN.....	1842
RSO LIVESTOCK .....	Story City, IA.....	1784-1788
SCHEEL LIVESTOCK .....	Alpena, SD.....	1789-1790
SIDWELL SHOW SHEEP .....	Gill, CO .....	1912-1916
SIMPSON LIVESTOCK .....	Ault, CO .....	1850-1853
SLACK CLUB LAMBS .....	North Manchester, IN .....	1860-1871
SMITH FAMILY DORSETS .....	Emporia, KS.....	1902-1903
STEVA ROBINSON SHOW STOCK .....	Belmont, WI.....	1814-1815
STILLWELL CLUB LAMBS .....	Frankfort, IN.....	1791-1795
SURBER SHOW SHEEP .....	Frankfort, IN.....	1796-1805
TURNER SHOW STOCK .....	VanAlstyne, TX .....	1891-1894
TURNER SHOW STOCK - BRYLIE TURNER .....	VanAlstyne, TX .....	1895-1896
WOLF CLUB LAMBS .....	Scranton, IA.....	1904-1906

## Dorset

## Advantage WS/WDs - start on page 124

AMYX SHEEP FARM .....	Sanger, TX.....	1933-1935
C & J LIVESTOCK .....	Polo, MO .....	1961-1964
COLE CLUB LAMBS .....	Elk City, OK .....	1931-1932
DANIELS CLUB LAMBS .....	Portland, IN.....	1944
DREIER LAROSH CLUB LAMBS .....	Newton, KS.....	1960
HEISDORFFER DORSETS .....	Sigourney, IA .....	1936
MENNEN CLUB LAMBS .....	Walton, IN.....	1937
NOC SHEEP CENTER .....	Tonkawa, OK.....	1966
PERRY CLUB LAMBS .....	Montpelier, IN.....	1945
SCHEEL LIVESTOCK .....	Alpena, SD.....	1952
SIDWELL SHOW SHEEP .....	Gill, CO .....	1946-1947
SIMPSON LIVESTOCK .....	Ault, CO .....	1959
SLACK CLUB LAMBS .....	North Manchester, IN .....	1953-1958
SRV SHOW LAMBS .....	Burley, ID .....	1965
SURBER SHOW SHEEP .....	Frankfort, IN.....	1943
TURNER SHOW STOCK .....	VanAlstyne, TX .....	1938-1940
TURNER SHOW STOCK - BRYLIE TURNER .....	VanAlstyne, TX .....	1941-1942
WRIGHTS ROCKY ACRES .....	Galena, MO.....	1948-1951

## Speckle-Faced WS/WDs - start on page 126

C & J LIVESTOCK .....	Polo, MO .....	1980-1982
DAVIS SOUTHDOWNS & CLUB LAMBS .....	Odell, IL .....	1984-1985
MENNEN CLUB LAMBS .....	Walton, IN.....	1971
PERRY CLUB LAMBS .....	Montpelier, IN.....	1983
SAPPINGTON LIVESTOCK .....	Hartsburg, MO.....	1974
SLACK CLUB LAMBS .....	North Manchester, IN .....	1975-1978
SRV SHOW LAMBS .....	Burley, ID .....	1986
STORMS HAMPSHIRE .....	Washburn, IL.....	1979
TURNER SHOW STOCK .....	VanAlstyne, TX .....	1972-1973

watch live streamed shows & sales at [www.dvauction.com](http://www.dvauction.com)

[www.midwestsale.com](http://www.midwestsale.com)

# WS/WD CONSIGNOR INDEX

## Hampshire WS/WDs - start on page 148

ALLEN SHOW LAMBS.....	Elk City, OK.....	2020-2023
ALLISON MCGOLDEN CLUB LAMBS.....	Arapaho, OK.....	2274-2281
ALLRED/ELLIOTT.....	Calumet, OK.....	2180-2192
BEGALKA LIVESTOCK.....	Castlewood, SD.....	2013-2019
BOOTLEGGERS CLUB LAMBS.....	Mead, NE.....	2222-2225
COLE CLUB LAMBS.....	Elk City, OK.....	2024-2033
CREGO LIVESTOCK.....	Ft Collins, CO.....	2290-2301
DREWRY CLUB LAMBS.....	Farmington, MN.....	2273
ELLERBROCK CLUB LAMBS.....	Atkinson, IL.....	2253-2272
ESTES SHOW LAMBS.....	Sanger, CA.....	2303-2304
FARROW HAMPSHIRE.....	Midland, TX.....	2001-2012
FLEENER CLUB LAMBS.....	Biglerville, PA.....	2207-2209
GREINER CLUB LAMBS.....	Keota, IA.....	2045-2046
HARKER FARMS.....	Mountain Grove, MO.....	2243
HARMS SHOW LAMBS.....	Lexington, IL.....	2070
HARRELL CLUB LAMBS.....	Indianapolis, IN.....	2311-2320
HAYS BROTHERS CLUB LAMBS.....	Perry, KS.....	2051-2064
HEEGS CRAZY H CLUB LAMBS.....	Shepherd, MT.....	2066-2069
HILL COUNTRY SHOW LAMBS.....	Boerne, TX.....	2080-2086
HINDMAN SHOW LAMBS.....	Albia, IA.....	2244-2250
JOHNSON FAMILY SHOW STOCK.....	Delavan, WI.....	2034-2041
KENNEDY LIVESTOCK.....	Kirkville, IA.....	2071
KIRSCHTEN SHEEP FARM.....	Alton, IA.....	2047-2050
MCLAUGHLIN-GRIFFIN SHEEP.....	Craig, CO.....	2171-2177
MENNEN CLUB LAMBS.....	Walton, IN.....	2042-2044
MILLER HAMPSHIRE.....	Seagraves, TX.....	2193-2200
NOC SHEEP CENTER.....	Tonkawa, OK.....	2136-2137
OTT CLUB LAMBS.....	Fairview, OK.....	2138-2150
PARR HAMPSHIRE.....	Mason City, IL.....	2072-2079
PERRY CLUB LAMBS.....	Montpelier, IN.....	2168-2169
PIRTLE FARMS.....	Copan, OK.....	2157-2158
POWERCAT CLUB LAMBS.....	Manhattan, KS.....	2201-2206
ROOKSTOOL CLUB LAMBS.....	Wamego, KS.....	2286-2289
RULE SHEEP COMPANY.....	Hawarden, IA.....	2094-2135
SCHMITZ CLUB LAMBS.....	Rhodes, IA.....	2210-2221
SIMPSON LIVESTOCK.....	Ault, CO.....	2159-2167
SLACK CLUB LAMBS.....	North Manchester, IN.....	2226-2242
STEVA ROBINSON SHOW STOCK.....	Belmont, WI.....	2065
STORMS HAMPSHIRE.....	Washburn, IL.....	2170
SRV SHOW LAMBS.....	Burley, ID.....	2310
TRIPLE J CLUB LAMBS.....	Saint George, UT.....	2305-2309
TURNER SHOW STOCK.....	VanAlstyne, TX.....	2151-2156
VIKING SHOW LAMBS.....	Morristown, IN.....	2302
WEST COAST CLUB LAMBS.....	Potter Valley, CA.....	2251-2252
WILLIAMS SHOW LAMBS.....	Mabel, MN.....	2178-2179
WOLF CLUB LAMBS.....	Scranton, IA.....	2282-2285
WRIGHTS ROCKY ACRES.....	Galena, MO.....	2087-2093

## Natural Colored WS/WDs - start on page 156

ALLISON MCGOLDEN CLUB LAMBS.....	Arapaho, OK.....	2351
BLUME CLUB LAMBS.....	Mineral Point, WI.....	2321-2322
BURKETT CLUB LAMBS.....	Grand Junction, IA.....	2341
CRAIG FAMILY LIVESTOCK.....	Paw Paw, MI.....	2349
DIAMOND D SHOW STOCK.....	Neoga, IL.....	2346-2348
ESTES SHOW LAMBS.....	Sanger, CA.....	2353-2354
HARMS SHOW LAMBS.....	Lexington, IL.....	2326
HILL COUNTRY SHOW LAMBS.....	Boerne, TX.....	2333
HINDMAN SHOW LAMBS.....	Albia, IA.....	2345
JOHNSON FAMILY SHOW STOCK.....	Delavan, WI.....	2323-2325
KEITZER CLUB LAMBS.....	Mediapolis, IA.....	2328
KENNEDY LIVESTOCK.....	Kirkville, IA.....	2336
KNAPP SISTERS CLUB LAMBS.....	Bloomfield, IA.....	2329
MCLAUGHLIN-GRIFFIN SHEEP.....	Craig, CO.....	2337-2338
MENNEN CLUB LAMBS.....	Walton, IN.....	2327
RULE SHEEP COMPANY.....	Hawarden, IA.....	2334-2335
SLACK CLUB LAMBS.....	North Manchester, IN.....	2339-2340
SRV SHOW LAMBS.....	Burley, ID.....	2344
TURNER SHOW STOCK.....	VanAlstyne, TX.....	2332
WEST COAST CLUB LAMBS.....	Potter Valley, CA.....	2342-2343
WISE CLUB LAMBS.....	Keenesburg, CO.....	2350
WOLF CLUB LAMBS.....	Scranton, IA.....	2352
WRIGHTS ROCKY ACRES.....	Galena, MO.....	2330-2331

## Suffolk WS/WDs - start on page 158

ALLISON MCGOLDEN CLUB LAMBS.....	Arapaho, OK.....	2403
ESTES SHOW LAMBS.....	Sanger, CA.....	2387-2388
FOSTER FARMS.....	Muskogee, OK.....	2394-2396
HILL COUNTRY SHOW LAMBS.....	Boerne, TX.....	2375
J-L LIVESTOCK.....	Salado, TX.....	2361
MCLAUGHLIN-GRIFFIN SHEEP.....	Craig, CO.....	2376-2385
MSB SHOW LAMBS.....	New Wilmington, PA.....	2389-2393
NOC SHEEP CENTER.....	Tonkawa, OK.....	2386
PIRTLE FARMS.....	Copan, OK.....	2365-2374
SLACK CLUB LAMBS.....	North Manchester, IN.....	2404-2416
TROXTELL/BROCKELMAN.....	Sherman, TX.....	2397-2402
WRIGHTS ROCKY ACRES.....	Galena, MO.....	2362-2364

### ADDITIONAL ENTRIES MAY HAVE BEEN RECEIVED AFTER DEADLINE FOR PRINTED CATALOG.

Late entries accepted until 24 hours before respective show.  
They will not be included in the printed or pdf version  
of this catalog, but can be found in the  
online searchable catalog found at  
**[www.midwestsale.com](http://www.midwestsale.com)**



# MIDWEST STUD RAM SALE - PRE-SALE & ENTRY INFORMATION

**Entry Processing & Fees:** Entries can be made online with credit card payment at [www.midwestsale.com](http://www.midwestsale.com), or by mail with the enclosed entry blank and payment by check. A class listing per breed is located on the back of the entry blank. Please note your breed's listed classes, as some may have changed. Entry fees are \$20 per head (\$60 per pen of three). Entry fees are nonrefundable- including for animals sifted from the sale, scratched from the sale, or that for other reasons fail to get to the sale.

**Entries Due APRIL 20th:** In an effort to produce the sale catalog in a timely manner, this deadline is final. We will accept entries after deadline, but they may not be included in the printed catalog. Entries will be accepted on an "Information Sale Day" basis, but we encourage you to include as much information as possible for cataloged entries. Late entries accepted until 24 hrs before respective show.

**Commission & Charges:** Sale commission is 10% of the full sale price of each animal, including any "no sales". There will be an additional 1% surcharge deducted from your sale settlement for the Missouri Sheep Producers, the sponsors of this sale. Breeds with a National Sale or Event designation will have an additional 1% (some have 2%) deducted for their National Associations. Ohio sheep entries also have a ½% deduction for the Ohio Sheep Commission. Some breeds also have us deduct for futurity nomination fees.

**Substitutions:** Substitutions (within or out of class/breed) will be allowed in the interest of improved quality. Please make sure to have correct paperwork (health and registration papers) on your entries.

**Registration Papers:** If consigning registered animals, please make sure to have your registration papers for entries to turn in at Check-in. If registration papers are not provided by close of sale, **a fee of \$10.00 per original registration will be billed or deducted** and your consignor check will be held until papers are provided. All consignors with registered animals will have transfer fees deducted on sheep sold as we transfer the registration papers to the new owners.

**Health Papers:** Standard interstate health paper (or copy of paper) is required for each animal, and will be turned in to sale management at check-in. Obtain health papers and any tests on June 5th or later to allow traveling time for the new owners after the sale. All entries must have scrapie tags!

**Required Testing:** All Yearling Rams and Fall Ram Lambs (born before January 1st of this year) must have ELISA test for B. Ovis within 30 days of the sale. Only rams with negative B. Ovis results will be allowed to sell. A positive result suggests epididymitis which can render rams sterile.

**DNA Test Information:** Those breeders wanting to list Codon test results (171 or 136, spider, etc.) on sale orders should include that with entries, and also bring a copy of the test results with your registration and health papers to Check-in. Codon provided by consignor will be included on the sale orders, but is not guaranteed by the Midwest Sale.

**Penning:** Chart will be made prior to the sale and all consignors must use the assigned pens. Any special penning request must accompany your sale entries! We will honor these requests whenever possible.

**Barn/Tack Pens:** Tack areas should be kept clean and orderly. ABSOLUTELY no refrigerator or microwave units can be plugged into barn electrical outlets. Units plugged into generators will be allowed.

**Consignor Responsibility:** As a consignor you are responsible for the cost incurred in the preparation and transportation of your animals to the sale, plus the feed and bedding at the sale. Hay and straw will be available on the fairgrounds at local prevailing prices.

# MIDWEST STUD RAM SALE - SALE RULES

**All sheep in the sale must be offered with Full Interest Selling!** All sheep must be guaranteed as breeders, if properly handled. Half-interest sales are permitted, but only at the option of the buyer(s). Consignors must offer the full interest through the sale.

**No semen right may be imposed by consignors subsequent to the sale of a ram.** Consignors may collect and retain rights to semen on rams sold, but only that semen collected prior to the sale. Rams that have been previously collected will be branded with a "C" merely as a means of letting the prospective buyers know that consignor is holding semen, and retaining rights to this semen. Please notify the sale staff when checking in the animal so that a "C" can be included on the paint branding card.

**Artificial Coloring:** Any artificial coloring of the head and legs, or of wool for the purpose of camouflaging black fiber is prohibited.

**Lambs Teeth:** All lambs should hold their lamb's teeth to 12 months of age.

**Show Placing and Sifting:** A class list can be found on the back of the entry blank. Classes with over 30 entries will be split by age after check-in except in Wether Sire and Dam Divisions. Only the top end of classes larger than 20 will be placed in all breeds. The balance of the class will be randomly drawn for sale order. Any unsound, inferior or unacceptable entries in the opinion of the Judge or Sale Classifier or Sifting Designee will be sifted. All decisions by the listed designees are final.

**Lamb Muzzles Prohibited:** Any consignor using muzzles on animals will be asked to remove them. If muzzles are seen on the animals again, these animals will be automatically dismissed from the sale.

**Blankets:** Blankets are to remain off animals once shown, except for late night protection.

**Shearing Rules:** All Southdowns, Texels, Shropshires, Dorpers, Wether Sires & Dams, plus Club Lambs show and sell slick-shorn... with No Butt Wool! The Suffolk, Hampshire, Montadale and Dorset Show & Sales will have special slick-sheared classes, but otherwise should have no more than one inch of wool on any part of the body. Corriedales, Natural Colored, Polypays, Columbias and Rambouillets are exempted, but should not be presented in overly long fleeces.

***The annual Midwest Stud Ram Sale, which takes place in Sedalia, Missouri each June, is North America's premier sheep show and sale. Heartland Livestock Services and members of the Midwest Sale management have an expectation of ethical behavior from consignors at this event. Behavior should reflect the national status of this show and sale. Should questions arise regarding a consignor's behavior, or their consignment, we reserve the right to investigate to our satisfaction.***



# MIDWEST STUD RAM SALE - GENERAL INFORMATION

**PROCEDURE ON TRANSIT ANIMALS IN THE DESIGNATED TRANSIT BARN:** Animals not consigned in the Midwest Sale are not allowed to be housed in the Sheep and Swine barns. Instead, they are considered transit animals and should be held in the horse barn stalls. Stalls for transit animals will be accounted for by Midwest Sale staff. All stalls will be locked prior to sale week and can then be rented by consignors/non-consignors through sale staff in the FFA Building. Stall rent will cost \$5.00 per pen per day for consignors, and \$15 per pen per day for non-consignors. All rentals must be paid up front and will pay rent through Sunday following the sale. We will require renter name, address, phone number, number of sheep penned, and a brief description of animals upon pen rental. If renter chooses to empty the pen prior to Sunday, they may return to the FFA Building for a refund of days not used, allowing the pen to again be locked by sale staff. Refunds will be allowed for the day staff is informed of the empty pen through Sunday. Renters wishing to lock their transit pens will be required to furnish their own locks for this purpose. Otherwise transit animals are to be held in personal trailers, at no responsibility to the Midwest Sale or its staff. ALL TRANSIT ANIMALS MUST ALSO HAVE HEALTH PAPERS available for inspection in accordance with Missouri health standards and rules and federal law. Please put transit animals on separate health papers from sale entries.

**Display Dogs Prohibited:** No display dogs will be allowed in the barns.

**Parking:** No trailers or trucks are to be parked adjacent to the barns as these are fire lanes.

**Settlement Checks:** Settlement checks will be mailed to consignors in early August on all sheep paid for by that time. Collections from "bad buyers" of necessity must be a shared responsibility. No consignor has ever failed to be paid for sheep sold through this sale, but unfortunately, there have been some delays from time to time due to circumstances beyond our control.

## SPECIAL BREED RULES

### Katahdin:

1. Only 100% Registered (White Papered) Katahdins are eligible. 2. Consignors must be KHSI or CKSI members. 3. All entries must be shown to determine their sale order. 4. Consignors should enter "A" coat yearlings or lambs that have shed their lamb coats. It is recognized that such shedding may not be possible for younger spring lambs, particularly any spring lamb entries born in March or April. 5. As Katahdins are Hair Sheep, no shearing, trimming or clipping will be permitted. Consignors should present their entries in as attractive manner as possible. Washing and brushing are encouraged. 6. No tail docked animals allowed.

### Dorper:

1. Fullblood and Purebred entries will be combined into single classes. 2. All rams should be High Type 3 or better. 3. Consignors are allowed 2 ram entries, any additional rams must have 2 ewes for each ram entered. 4. All entries must be slick sheared within one week of the show unless the animal has completely shed at the time of the show. No carding or blocking will be permitted.

**Montadales:** All entries MUST be codon tested and lab reports MUST accompany registration papers at Check-in. You will be billed an additional \$10 entry fee by MSBA.

**Polypays:** 1. All animals consigned to the sale must be from multiple births. 2. All yearling ewes consigned must have lambed prior to sale.

### Texels:

1. The Texel Sheep Breeders Society has determined that animals will not be allowed to be penned and participate in the show and sale unless the animal has a liftable tail dock (there must be tail vertebrae liftable by hand). The recommended tail length is 1.5 inches which would approximate a dock at the distal end of the caudal fold. All animals born after July 1, 2014 must conform to the tail docking rule in order to participate in the National Texel Show and Sale. 2. The Texel Sheep Breeders Society has determined that only sheep that have been tested negative to Ovine Progressive Pneumonia (OPP) within 30 days prior to the National Texel Show and Sale will be allowed to be penned and participate in the National Texel Show and Sale. All sheep must be accompanied by a negative OPP AGID test regardless of age. The OPP AGID test must be run by an American Academy of Veterinary Laboratory Diagnosticians (AAVLD) accredited lab. The list of accredited labs can be found at [www.aavld.org/accredited-laboratories](http://www.aavld.org/accredited-laboratories).

Exhibitors must show a copy of the negative test results to the sale chair. Animal identification must match test result identification. Make certain that your veterinarian correctly identifies your sale animals on the paper work. The animals must be identified in one or more of the following ways in order to participate: a) Mandatory Scrapie Identification tags b) Scrapie Flock Certification Program tags c) Ear tattoos that conform to the Scrapie Flock Certification Program and are recognized as such by the State of Flock Origin and the Federal Government

Buyers at the sale must be aware that a negative OPP test within 30 days prior to the sale does not guarantee disease free status. Purchased animals should be isolated and retested based upon your veterinarian's advice to further reduce risk.

### Southdowns:

1. HEREDITARY CHONDRODYSPLASIA, ECTODERMAL DYSPLASIA, and CODON 171 SALE WARRANTY: At all sales sponsored by this association the seller warrants to the buyer that sheep sold are free of Hereditary Chondrodysplasia (spider), Ectodermal Dysplasia (hairy lamb) and contain a minimum of one R at codon 171. Any claimed violation of this warranty shall be settled between the buyer and seller. This guarantee shall constitute a contract between the buyer and the seller only. No other parties, including but not limited to the American Southdown Breeders' Association, Sale Management and sponsoring organizations, shall assume any liability, legal or otherwise, express or implied. Any seller failing to in good faith comply with this rule shall be denied the right to register and transfer with the Association and will be automatically barred from selling any sheep for five years or until resolved to this sale or any sale sponsored or sanctioned by the American Southdown Breeders' Association. 2. DNA TESTING: Designate Gene Check as official lab for ASBA Show and Sale work. (Summer 2009.)

**Shropshires:** All entries are to be slick shorn with in 5 days of the show from the hock and knees up and the poll back. Wool should be left on the lower legs below the hock and knee joints and on the poll. There should be no wool left above the hock or knee joints.

### Suffolk:

The United Suffolk Sheep Association has adopted the following requirements for all USSA sanctioned sales, including the Midwest Sale. This applies to both breeding sheep and wether sires and dams.

Registered Suffolks of all genotypes (NN, NS, RR, QR, QQ) will be allowed to sell. Each consignor must declare and guarantee the genetic makeup of each of their entries with respect to both spider syndrome and scrapie susceptibility (codon 171). Any registered Suffolk may be sold as long as this information is provided at the time of paper check-in prior to the start of the shows. DNA test results are not required and consignors may declare and guarantee the genotypes of their entries based solely on pedigree. Genotype information (NS or NN and QQ, QR or RR) will be printed on the sale order, which is prepared following the shows.

Any buyer who wishes to have the benefit of this guarantee must have the animal DNA tested, at the buyer's expense, to confirm whether or not the sheep is as declared by the seller with respect to either scrapie susceptibility or spider syndrome. Such testing must be performed within 45 days of the date of sale. If a sheep is determined by the buyer's DNA testing to be of lesser genotype than the consignor declared at the sale, the seller shall have the option of having the animals retested at the seller's expense. The seller must arrange for such testing within two weeks of receipt of buyer's test results or a mutually agreeable timetable. In the event there is a conflict in the results between the two tests, a third test will immediately be run with the cost of such third test to be equally shared by the buyer and seller.

If the animal is determined to be less than declared by the consignor or if the seller fails to provide for a re-test, the sheep shall be returned to the seller with the costs associated with the transportation of the returned sheep being equally shared by the buyer and the seller and the seller shall refund the full purchase price of the animal promptly, with all fees and percentages levied against the animal retained by the sale.

This guarantee shall constitute a contract between the buyer and seller only. No other parties, including but not limited to the USSA, sale management, sponsoring organizations, shall assume any liability, legal or otherwise, express or implied. Sellers failing to comply with the spirit of these provisions will be subject to being barred from future USSA sanctioned sales.



# Participating Breeds

## Secretary/Registrar Contact Information



### **Columbia Sheep Breeders Association**

*Charles Worm, Registrar*  
PO Box 722, Lakefield, MN 56150  
Phone: 507.360.2160  
Fax: 507.662.6294  
charliew@extendedag.com

### **American Corriedale Association**

*Marcia Craig, Executive Secretary*  
PO Box 391, Clay City, IL 62824  
Phone: 618.676.1046 or 618.780.7747  
Fax: 618.676.1133  
amcorr@frontier.com

### **American Dorper Sheep Breeders Society**

*Doug Gillespie, Executive Secretary*  
751 Boston Post Rd, Weston MA 02493  
Phone: 254.681-8793  
dorpers@ymail.com

*Ronda Sparks, Registrar*  
PO Box 259, Hallsville, MO 65255  
Phone: 573.696.2550  
Fax: 573.696-2030  
adsbsoffice@centurytel.net

### **Continental Dorset Club**

*Debra Hopkins, Secretary*  
PO Box 506, N Scituate, RI 02857  
Phone: 401.647.4676  
Fax: 401.647.4679  
cdc Dorset@cox.net

### **American Hampshire Sheep Association**

*Jeff Ebert, Secretary*  
PO Box 231, Wamego, KS 66547  
Phone: 785.456.8500  
Fax: 785.456.8599  
asregistry@gmail.com

### **Katahdin Hair Sheep International**

*Jim Morgan, Operations Office*  
PO Box 778 Fayetteville, AR 72702  
Phone: 479.444.8441  
info@katahdins.org

*John Savage, Registrar*  
1039 State Rte 168, Darlington PA 16115  
Phone: 724.843.2084  
registry@katahdins.org

### **Montadale Sheep Breeders Association**

*Kendra Fleck, Secretary*  
47289 SD Hwy 324, Brookings, SD 57006  
Office: 605.693.2161  
Cell: 814.441.0981  
kendrafleck@aol.com

*John Savage, Registrar*  
1039 State Rte 168, Darlington PA 16115  
Phone: 724.843-2084  
registry@katahdins.org

### **American Colored Sheep Registry**

*Barbara Kloese, Registrar/Secretary*  
429 West US Hwy 30, Valparaiso, IN 46385  
Phone: 219.799.9665

### **Natural Colored Wool Growers Association**

*Kate Lowder, Secretary*  
19477 Indian Road, Kellyville, OK 74039  
Phone: 918.688.3365  
kmlowder@aol.com

*John Savage, Registrar*  
1039 State Rte 168, Darlington PA 16115  
Phone: 724.843-2084  
ncwga@accuregister.com

### **American Polypay Sheep Association**

*Associated Registries, Registrar*  
PO Box 231, Wamego, KS 66547  
Phone: 785.456.8500  
Fax: 785.456.8599  
asregistry@gmail.com

### **American Rambouillet Breeders Association**

*Robbie Eckhoff, Executive Secretary*  
PO Box 214, Hawley, TX 79525  
Phone: 409.256.3687  
eckhoff5@aol.com

*Associated Registries, Registrar*  
PO Box 231, Wamego, KS 66547  
Phone: 785.456.8500  
Fax: 785.456.8599  
asregistry@gmail.com

### **American Shropshire Registry Association**

*Becky Peterson, Secretary*  
41 Bell Road, Leyden, MA 01337  
Phone: 413.624.9652  
shropsec@hotmail.com

### **American Southdown Breeders Association**

*Gary Jennings, Secretary*  
100 Cornerstone Rd, Fredonia, TX 76842  
Phone: 325.429.6226  
Fax: 325.429.6225  
southdown@ctesc.net

### **United Suffolk Sheep Association**

*Amanda Everts, Secretary*  
PO Box 121, Holland, IA 50642  
Office: 641.684.5291  
Cell: 641.680.6509  
Fax: 734.335.7646  
info@U-S-S-A.org

### **Texel Sheep Breeders Society**

*Niki Fisher, Secretary*  
2720 NE 25th Ave, Payette, ID 83661  
Phone: 208.642.7131  
usatexels@gmail.com

*Associated Registries, Registrar*  
PO Box 231, Wamego, KS 66547  
Phone: 785.456.8500  
Fax: 785.456.8599  
asregistry@gmail.com

### **American Tunis Registry**

*Associated Registries, Registrar*  
PO Box 231, Wamego, KS 66547  
Phone: 785.456.8500  
Fax: 785.456.8599  
asregistry@gmail.com

### **National Tunis Sheep Registry**

*Associated Registries, Registrar*  
PO Box 231, Wamego, KS 66547  
Phone: 785.456.8500  
Fax: 785.456.8599  
asregistry@gmail.com

*Help your breed secretaries  
and registrars by having all your  
paperwork in early for Summer shows & sales!*

**www.midwestsale.com**



*Make your list of lots to purchase!*



Don't Miss the **All-American Junior Show**  
**Live Benefit Auction**  
during Supreme selection on  
Wednesday evening!

**Digi-Star Electronic Scale**

Donated by TopCon Agriculture  
(\$2,295 value)

**Home Page Announcement  
on championdrive.com**

Donated by Novel Designs  
(\$300 value)

**5 LAI Surgeries during  
the 2017 breeding season**

Donated by Reproduction Sepeciality Group  
(\$200 value)

**4000s Premier Electric Shears**

Donated by Profiles Show Supply  
(\$300 value)

**Commission Free Online Sale  
20 head limit**

Donated by Willoughby Sales  
(value is 10% of Sale Gross)

**A-Line Feeder**

Donated by Ketcham Sheep Equipment  
(\$400 value)

*See page 17 for more details  
on items in auction.*

**www.midwestsale.com**

Follow us:  **Midwest Stud Ram Sale**

# Please Note these SALE REMINDERS AND INFORMATION



## Catalog PDF and Online Searchable Catalog:

Copy of this catalog can be found online at  
[www.midwestsale.com](http://www.midwestsale.com)

You also have the online searchable catalog option to make finding sections of entries by breed or class easier.

## Penning Charts:

Pen assignments are not included in this catalog, so to allow for timely printing and mailing. They will be accessible at

[www.midwestsale.com](http://www.midwestsale.com)

and posted in barns... all pens will be tagged upon consignor arrival as well.

## Show and Sale Times:

The first show or sale each day will have a designated start time. Breeds will sell in the order listed on that day's schedule with only a 5 minute break between breeds. Typically, it takes approximately one minute to sell each lot.

## Online Viewing of Shows & Sales:

All shows and sales will be live streamed on [www.DVAuction.com](http://www.DVAuction.com) - You will need to set up an account on the site to view the live stream. You can also register to purchase animals during the sales.

## Mail Bids:

Those buyers unable to attend, or who do not wish to bid online through DVAuction can still purchase animals through "mail bid". You may do this by contacting sale staff listed at left. Please contact them in advance of the sale, or early enough during the sale that they can assist with your bid in a timely manor.

## Future Sale Dates:

Always a FULL WEEK ending  
on the LAST SATURDAY in June!

**JUNE 25-30, 2018**

**JUNE 24-29, 2019**

**JUNE 22-27, 2020**

**JUNE 21-26, 2021**

**JUNE 20-25, 2022**

watch live  
streamed shows & sales at  
[www.dvauction.com](http://www.dvauction.com)

## Procedure for Transit Animals in the designated Transit Barns:

Animals not consigned in the Midwest Sale are not allowed to be housed in the Sheep and Swine barns. Instead, they are considered transit animals and should be held in the horse barn stalls. Stalls for transit animals will now be accounted for by Midwest Sale staff. All stalls will be locked prior to sale week and can then be rented by consignors/non-consignors through sale staff in the FFA Building.

Stall rent will cost \$5.00 per pen per day for consignors, and \$15 per pen per day for non-consignors. All rentals must be paid up front and will pay rent through Sunday following the sale. We will require renter name, address, phone number, number of sheep penned, and a brief description of animals upon pen rental. If renter chooses to empty the pen prior to Sunday, they may return to the FFA Building for a refund of days not used, allowing the pen to again be locked by sale staff. Refunds will be allowed for the day staff is informed of the empty pen through Sunday. Renters wishing to lock their transit pens will be required to furnish their own locks for this purpose. Otherwise transit animals are to be held in personal trailers, at no responsibility to the Midwest Sale or its staff.

ALL TRANSIT ANIMALS MUST ALSO HAVE HEALTH PAPERS available for inspection in accordance with Missouri health standards and rules and federal law. Please put transit animals on separate health papers from sale entries.

## Buyer Checkout:

CASH, CHECK, or CREDIT CARD payment on Sale Day. A convenience fee will be charged for credit card payment.

After sheep are purchased, come to the airconditioned FFA Building and check out with the clerks. You will receive a list of the sheep purchased, and we will clarify any needed transfer information.

Once payment is made and you have your receipt, you can obtain health papers on your purchases in the same building. It is highly recommended that all buyers obtain health papers on animals purchased.

**When loading, please double check that the lot numbers listed on the receipt correspond with the lot numbers painted on the animals' backs!**

**Mail Bids and Credit Card  
purchases will be charged  
5% convenience fee**

## General Contact Information:

Midwest Sale is managed by Heartland Livestock Services, LLC. All contact info is below. You can also contact Curt Overcash, Managing Partner (info listed on the auctioneer page) or Bret Oelke, Public Relations (info listed on the ringman page).

Follow us on Facebook:  
 **Midwest Stud Ram Sale**



PO Box 72 - Milo, IA 50166

midweststudramsale@gmail.com  
[www.midwestsale.com](http://www.midwestsale.com)

## Sale Contacts:

### Ringmen (Mail Bids)

Bret Oelke..... (218) 770-2428  
Andy Korb..... (513) 312-0648  
Ryan Livermont..... (507) 215-1923  
Tyler Lobdell..... (815) 238-0832  
Donnie Allen..... (580) 920-9867  
Steve George..... (419) 306-1144  
Rodney Morris..... (217) 273-5299  
Joe Gonzales..... (806) 778-8927  
Dennis Wood..... (937) 539-2008  
Dan Houser..... (918) 650-2462  
Travis Snyder..... (309) 221-1935  
Jeff Ruckert..... (785) 565-8293  
Steve Majchrzak..... (410) 463-5476  
Kyle George..... (573) 825-8000  
Clayton Neal..... (567) 207-7296  
Tyler Meyers..... (937) 935-6589  
Chris MacCauley..... (484) 319-8376

### Auctioneers

Curt Overcash..... (815) 210-7000  
Gary Saylor..... (937) 464-7214  
Bobby Fletcher..... (806) 787-3030  
Danny Westlake..... (937) 243-5111  
Billy MacCauley..... (484) 612-3983

### Heartland Partners

Curt Overcash..... (815) 210-7000  
Bret Oelke..... (218) 770-2428  
Karey Claghorn..... (515) 229-0061  
Brandan Bruce..... (515) 313-8765  
Millie Moore..... (701) 541-1120  
Carrie Taylor-Kelly..... (515) 229-2893

### Other Sale Staff

Mary Anne Keck..... (417) 844-5895  
Tricia Schneidermeyer.. (636) 295-7224  
Rob Frost..... (740) 505-4858

### DV Auction Office

dva@dvauction.com or (402) 316-5460

Sale Fax..... (888) 371-3363

# BREED AND CLASS LISTING

**Corriedale**  
**Columbia**  
**Rambouillet**  
**Natural Colored**  
**Tunis**  
**Southdown**

Yearling Ram  
 Fall Ram Lamb  
 January Ram Lamb  
 February Ram Lamb  
 March Ram Lamb  
 Yearling Ewe  
 Fall Ewe Lamb  
 January Ewe Lamb  
 February Ewe Lamb  
 March Ewe Lamb

**Katahdin**  
**Dorper**  
**White Dorper**

Yearling Ram  
 Fall Ram Lamb  
 January Ram Lamb  
 February Ram Lamb  
 March Ram Lamb  
 Yearling Ewe  
 Pen of Yearling Ewes  
 Fall Ewe Lamb  
 January Ewe Lamb  
 February Ewe Lamb  
 March Ewe Lamb  
 Pen of Ewe Lambs

**Texel**  
**Polypay**

Yearling Ram  
 Fall Ram Lamb  
 January Ram Lamb  
 February Ram Lamb  
 March Ram Lamb  
 Brood Ewe  
 Yearling Ewe  
 Fall Ewe Lamb  
 January Ewe Lamb  
 February Ewe Lamb  
 March Ewe Lamb

**Polled Dorset**  
**Horned Dorset**

Yearling Ram  
 Early Fall Ram Lamb (9-1 to 9-30)  
 Late Fall Ram Lamb (10-1 to 11-30)  
 Winter Ram Lamb (12-1 to 1-31)  
 Spring Ram Lamb (2-1 & after)  
 SLICK Ram Lamb (9-1 & after)  
 Fall Yearling Ewe  
 Spring Yearling Ewe  
 SLICK Yearling Ewe  
 Early Fall Ewe Lamb (9-1 to 9-30)  
 Late Fall Ewe Lamb (10-1 to 11-30)  
 SLICK Fall Ewe Lamb (9-1 to 11-30)  
 Winter Ewe Lamb (12-1 to 1-31)  
 Spring Ewe Lamb (2-1 & after)  
 SLICK Winter/Spring Ewe Lamb (12-1 & after)

**Shropshire**

Yearling Ram  
 Fall Ram Lamb  
 December Ram Lamb  
 January Ram Lamb  
 February Ram Lamb  
 March Ram Lamb  
 Yearling Ewe  
 Fall Ewe Lamb  
 December Ewe Lamb  
 January Ewe Lamb  
 February Ewe Lamb  
 March Ewe Lamb

**Suffolk**  
**Hampshire**  
**Montadale**

FITTED Yearling Ram  
 FITTED Fall Ram Lamb  
 FITTED January Ram Lamb  
 FITTED February Ram Lamb  
 FITTED March Ram Lamb  
 FITTED Yearling Ewe  
 FITTED Fall Ewe Lamb  
 FITTED January Ewe Lamb  
 FITTED February Ewe Lamb  
 FITTED March Ewe Lamb  
 SLICK Yearling Ram  
 SLICK Fall Ram Lamb  
 SLICK January Ram Lamb  
 SLICK February Ram Lamb  
 SLICK March Ram Lamb  
 SLICK Yearling Ewe  
 SLICK Fall Ewe Lamb  
 SLICK January Ewe Lamb  
 SLICK February Ewe Lamb  
 SLICK March Ewe Lamb

**WETHER**  
**SIRES & DAMS**  
**Dorsets**  
**Dorset Advantage**  
**Hampshires**  
**Suffolks**

*\*above 4 must have registration papers*

**Natural Colored**  
**Speckle-Faced**  
**Crossbreds**

Yearling Ram  
 Fall Ram Lamb  
 December Ram Lamb  
 January Ram Lamb  
 February Ram Lamb  
 March Ram Lamb  
 April Ram Lamb  
 Yearling Ewe  
 Fall Ewe Lamb  
 December Ewe Lamb  
 January Ewe Lamb  
 February Ewe Lamb  
 March Ewe Lamb  
 April Ewe Lamb

**CLUB LAMBS**

*\*wethers only*  
*\*testicles removed*  
 Crossbred  
 Dorset  
 Dorset Advantage  
 Hampshire  
 Natural Colored  
 Shropshire  
 Southdown  
 Speckle-Face  
 Suffolk

**NEW** Bedding Vendor

# Asbury Farms Bedding

Pre-Order ASAP to ensure adequate supplies!

## Quality

## Shavings

## Hay

## Straw

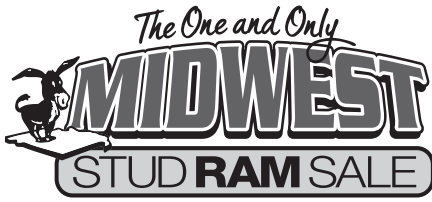
**Nick Asbury**  
 (660) 619-3994 or  
[Asbury.farms@yahoo.com](mailto:Asbury.farms@yahoo.com)

When placing order include:

- Farm/Consignor Name
- Contact Phone
- Your arrival date
- Sheep Barn or Swine Barn
- General area of Barn
- Pens (if chart is published)
- Items Needed/Quantity of Each

Cash or Check payment at time of delivery/pickup  
 No Credit Cards

[www.midwestsale.com](http://www.midwestsale.com)



Follow us on Facebook:  
**Midwest Stud Ram Sale**



midweststudramsale@gmail.com  
**www.midwestsale.com**

## Sale Contacts:

### Ringmen (Mail Bids)

Bret Oelke..... (218) 770-2428  
 Andy Korb..... (513) 312-0648  
 Ryan Livermont..... (507) 215-1923  
 Tyler Lobdell..... (815) 238-0832  
 Donnie Allen..... (580) 920-9867  
 Steve George..... (419) 306-1144  
 Rodney Morris..... (217) 273-5299  
 Joe Gonzales..... (806) 778-8927  
 Dennis Wood..... (937) 539-2008  
 Dan Houser..... (918) 650-2462  
 Travis Snyder..... (309) 221-1935  
 Jeff Ruckert..... (785) 565-8293  
 Steve Majchrzak..... (410) 463-5476  
 Kyle George..... (573) 825-8000  
 Clayton Neal..... (567) 207-7296  
 Tyler Meyers..... (937) 935-6589  
 Chris MacCauley..... (484) 319-8376

### Auctioneers

Curt Overcash..... (815) 210-7000  
 Gary Saylor..... (937) 464-7214  
 Bobby Fletcher..... (806) 787-3030  
 Danny Westlake..... (937) 243-5111  
 Billy MacCauley..... (484) 612-3983

### Heartland Partners

Curt Overcash..... (815) 210-7000  
 Bret Oelke..... (218) 770-2428  
 Karey Claghorn..... (515) 229-0061  
 Brandan Bruce..... (515) 313-8765  
 Millie Moore..... (701) 541-1120  
 Carrie Taylor-Kelly..... (515) 229-2893

### Other Sale Staff

Mary Anne Keck..... (417) 844-5895  
 Tricia Schneidermeyer..(636) 295-7224  
 Rob Frost..... (740) 505-4858

### DV Auction Office

dva@dvauction.com or (402) 316-5460

**Sale Fax**..... (888) 371-3363

## Advertiser Listing

### Breeder Ads

Begalka Livestock.....	128
C & J Livestock.....	10
Ellerbrock Club Lambs*ELITE.....	130-131
Fisher Texels.....	10
Jacobsen Ranch (Shared Ad).....	23
Miller Farms (Shared Ad).....	23
Northern Oklahoma College.....	133
Poppen Montadales (Shared Ad).....	23
Prairie Lane Farm.....	19
Slack Club Lambs*ELITE.....	134-135
Turner Show Stock.....	137

\*MIDWEST STUD RAM SALE SPONSOR

### Industry/Commercial Ads

3 in 1 Feeders.....	132
All-American Junior Show.....	16-17
American Hampshire Sheep Assn.....	28-29
American Southdown Breeders Assn.....	22
Asbury Farms Bedding.....	27
Banner Sheep Magazine.....	19
BioZyme/Duraferm*SILVER.....	6
Breeders World.....	138
Continental Dorset Club.....	24-25
DV Auctions.....	2
Heardboss*SILVER.....	5
Katahdin Hair Sheep International.....	26
Ketcham's Sheep Equipment*PLATINUM.....	IBC
LAG Industries.....	15
Mid-States Wool Growers*SILVER.....	5
Novel Designs/Champion Drive.....	129
Pipestone Veterinary Services.....	30
Profiles Show Supply.....	26
Purina - Honor Show Chow*PLATINUM+... IFC	
Royal-S Design.....	20
Show Stock Planet*SILVER.....	136
Stegall Fabrication & Engineering, LLS....	30
Townsend Sales.....	34
United Suffolk Sheep Assn.....	22
Willoughby Sales.....	31

\*MIDWEST STUD RAM SALE SPONSOR

### Local Sedalia Ads

Dickie Doo BBQ.....	15
Gene's Hats & Boots.....	15
Real Estate Brokers.....	13

## Fun & Games

Word Shapes.....	13
Maze.....	13, 83
Word Find.....	27, 127
Cross Word.....	45
Hidden Objects.....	51, 155
Word Scramble.....	83
Sudoku.....	83, 123
Connect the Dots.....	99
Picture Copy.....	123

## Table of Contents

<b>Midwest Sale Schedule.....</b>	<b>1</b>
On the Cover & 2016 Champions.....	3
2016 Sale Averages.....	4
Auctioneers & Judges.....	4
Ringmen.....	7
2016 Best Consignment Winners.....	8
Sedalia Business/Area Map.....	9
Sale Staff.....	11
2016 Best Overall Consignment	
2016 Shepherd's Award.....	12
2016 Doak Awards.....	14
Participating Breeds.....	18
Tribute to Rollie Rosenboom.....	17
2017 Sale Sponsors.....	32
Update on past Sale Staff.....	32
General Information.....	35
<b>Entries by Breed..... starting on 36</b>	
<i>see index below for each breed starting page</i>	
Reminders & Class Listing.....	102-103
Pre-Sale & Breed Rules.....	106-107
<b>Vendor Map &amp; Index..... starting on 139</b>	
Fairgrounds Map.....	144
Lesson from Larry (Paint Branding)....	145
30th Wether Sire Sale.....	146-147
<b>Consignor Index.....starting on 160</b>	
<i>listed by breed, by alpha with lot #'s</i>	
Pre-Sale & Breed Rules.....	168-169
Participating Breeds.....	171
Reminders & Class Listing.....	174-175
<b>Catalog Index.....176</b>	

## Entries by Breed

*Breeds are listed in mostly Alphabetical Order*

Columbias.....	36
Corriedales.....	37
Dorpers.....	starting on 38
White Dorpers.....	starting on 41
Horned Dorsets.....	44
Polled Dorsets.....	starting on 46
Hampshires.....	starting on 52
Katahdins.....	starting on 60
Montadales.....	starting on 68
Natural Coloreds.....	starting on 71
Polypays.....	starting on 72
Rambouillets.....	starting on 74
Shropshires.....	starting on 76
Southdowns.....	starting on 78
Suffolks.....	starting on 84
Texels.....	starting on 92
Tunis.....	starting on 96
Club Lambs.....	starting on 110
Crossbred WS/WDs.....	starting on 112
Dorset WS/WDs.....	starting on 118
Dorset Advantage WS/WDs..	starting on 124
Speckle-Faced WS/WDs.....	126
Hampshire WS/WDs.....	starting on 148
Natural Colored WS/WDs..	starting on 156
Suffolk WS/WDs.....	starting on 158